



STAINLESS STEEL OPEN BASE STYLE ENCLOSED BASE WORK TABLES



Flat Top



1 1/2" Backsplash



5" Backsplash



FEATURING BOLT-ON
STAINLESS STEEL LEG

Item #: _____ Qty #: _____
 Model #: _____
 Project #: _____

FEATURES:

FLAT TOP is furnished with a 1 5/8" sanitary rolled rim on the front and 1 5/8" square bend edges on the 2 sides and rear.

1 1/2" SPLASH is furnished with a 1 5/8" sanitary rolled rim on the front side and 1 5/8" square bend edges on the 2 sides and a 1 1/2" splash of single metal thickness on the rear side.

5" SPLASH is furnished with a 1 5/8" sanitary rolled rim on the front side and 1 5/8" square bend edges on the 2 sides and a 5" splash with a 1" return on the rear side.

Rear flush panel along the rear of the base unit.

CONSTRUCTION:

All TIG welded. Exposed areas finished to match adjacent surfaces.

Entire Top is mechanically polished to a satin finish and is sound deadened.

Hat section secured to Top reinforces and maintains level working surface.

UNI-BODY DESIGN sides, back and fixed mid shelf (sold separately) are welded to form a single rigid structure.

Legs bolt on to table base.

MATERIAL:

TOP is 14 gauge stainless steel type "304" series with galvanized understructure.

BODY is 18 gauge stainless steel type "430" series.

LEGS are stainless steel and include 1 1/2" adjustable hex foot.

	L	FLAT TOP	1 1/2" SPLASH	5" SPLASH	Approx. Wt.	Approx. Cu. Ft.
24" WIDE	36"	EB-SS-243	EF-SS-243	EK-SS-243	135 lbs.	30
	48"	EB-SS-244	EF-SS-244	EK-SS-244	170 lbs.	38
	60"	EB-SS-245	EF-SS-245	EK-SS-245	205 lbs.	47
	72"	EB-SS-246	EF-SS-246	EK-SS-246	242 lbs.	56
	84"	EB-SS-247	EF-SS-247	EK-SS-247	282 lbs.	66
	96"	EB-SS-248	EF-SS-248	EK-SS-248	317 lbs.	74
	108"	EB-SS-249	EF-SS-249	EK-SS-249	360 lbs.	83
	120"	EB-SS-2410	EF-SS-2410	EK-SS-2410	400 lbs.	92
30" WIDE	144"	EB-SS-2412	EF-SS-2412	EK-SS-2412	470 lbs.	109
	36"	EB-SS-303	EF-SS-303	EK-SS-303	145 lbs.	35
	48"	EB-SS-304	EF-SS-304	EK-SS-304	182 lbs.	45
	60"	EB-SS-305	EF-SS-305	EK-SS-305	220 lbs.	55
	72"	EB-SS-306	EF-SS-306	EK-SS-306	260 lbs.	66
	84"	EB-SS-307	EF-SS-307	EK-SS-307	315 lbs.	76
	96"	EB-SS-308	EF-SS-308	EK-SS-308	358 lbs.	87
	108"	EB-SS-309	EF-SS-309	EK-SS-309	400 lbs.	97
36" WIDE	120"	EB-SS-3010	EF-SS-3010	EK-SS-3010	440 lbs.	107
	144"	EB-SS-3012	EF-SS-3012	EK-SS-3012	518 lbs.	128
	36"	EB-SS-363	EF-SS-363	EK-SS-363	160 lbs.	41
	48"	EB-SS-364	EF-SS-364	EK-SS-364	206 lbs.	53
	60"	EB-SS-365	EF-SS-365	EK-SS-365	252 lbs.	65
	72"	EB-SS-366	EF-SS-366	EK-SS-366	297 lbs.	77
	84"	EB-SS-367	EF-SS-367	EK-SS-367	342 lbs.	90
	96"	EB-SS-368	EF-SS-368	EK-SS-368	440 lbs.	102
108"	EB-SS-369	EF-SS-369	EK-SS-369	490 lbs.	114	
120"	EB-SS-3610	EF-SS-3610	EK-SS-3610	540 lbs.	126	
144"	EB-SS-3612	EF-SS-3612	EK-SS-3612	640 lbs.	151	

Mid Shelves Are Available.

To Add a Fixed Mid Shelf, Add "M" After each Model Number.
 Upgrade to Adjustable Mid Shelf. Add TA-116.



Customer Service Available To Assist You 1-800-645-3166 8:30 am - 8:00 pm E.S.T.

For Orders & Customer Service:

Email: customer@advancetabco.com or Fax: 631-242-6900

For Smart Fabrication™ Quotes:

Email: smartfab@advancetabco.com or Fax: 631-586-2933

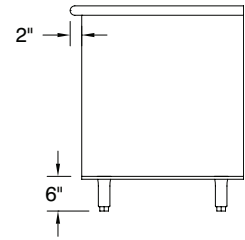
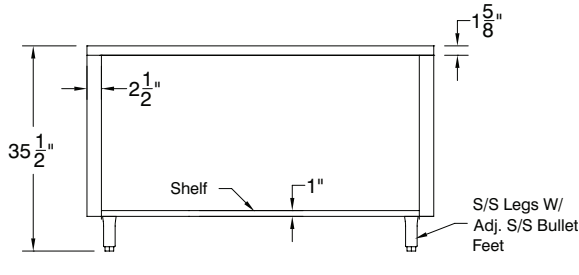
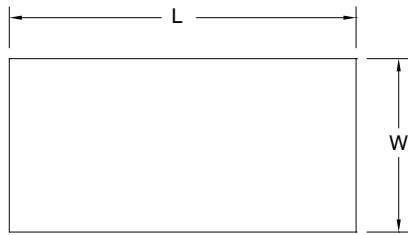
DETAILS and SPECIFICATIONS

TOL ± .500"

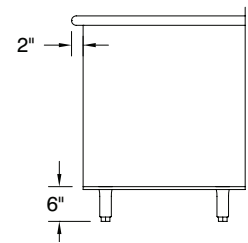
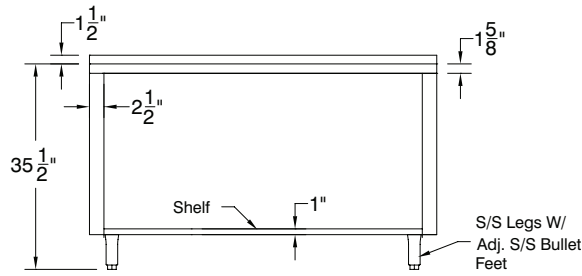
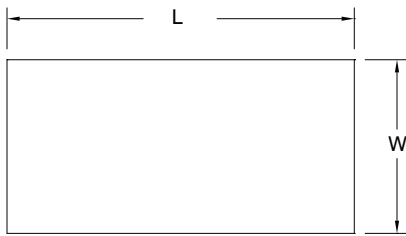
Units 7' and larger are furnished with 6 legs.

ALL DIMENSIONS ARE TYPICAL

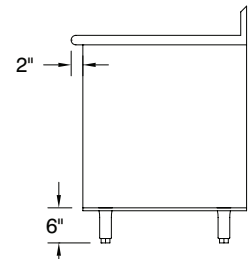
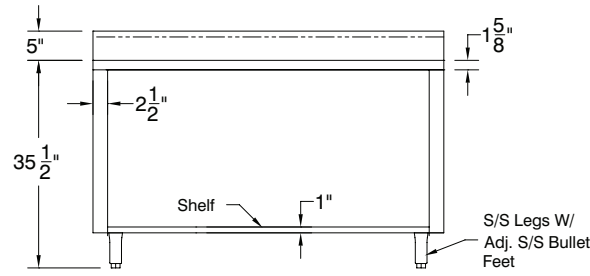
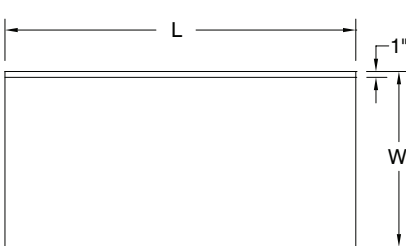
EB-Series Flat Top



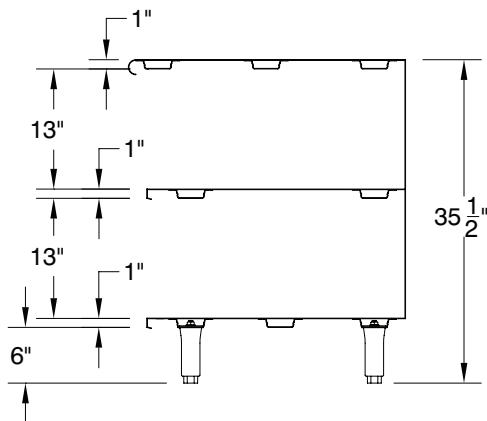
EF-Series 1 1/2" Rear Splash



EK-Series 5" Rear Splash



OPTIONAL MID SHELF DETAILS



OPTIONAL ENCLOSED BASE ACCESSORIES

- TA-20L Replacement Bolt-on Leg
- TA-19L Replacement Bolt-on Leg
With Flanged Bullet Foot
- TA-255P 5" Heavy Duty Polyurethane Casters
(set of 4 - 2 w/ Brakes)
- TA-255AP.... 5" Heavy Duty Polyurethane Casters
(set of 6 - 2 w/ Brakes)
- TA-46 Door Locks
- TA-54 Removable Kick Plate

TA-116 ADJUSTABLE ENCLOSED BASE CABINET MID SHELF (Sold Separately)

Shelves Over 36" In Length Require Multiple Sections With Center Partition.

