

Item #: \_\_\_\_\_ Qty #: \_\_\_\_\_  
Model #: \_\_\_\_\_  
Project #: \_\_\_\_\_

## STANDARD CABINET

### DESIGN:

Furnished with a 2" x 1" square die embossed No-Drip countertop offset edge on 3 sides.  
Furnished with a 5" Back splash with a 1" return.  
Door is a double panel design.  
Designed so that utility lines have access for ease of installation.  
Furnished with **K-124** 6" extended spout faucet & drain.

### MATERIAL:

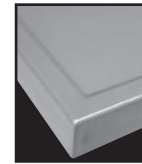
TOP is 14 gauge stainless steel type "304" series.  
BODY is 18 gauge stainless steel type "430" series.  
Faucet is chrome plated.  
Stainless steel basket type drain.  
LEGS are stainless steel and include 1 1/2" adjustable hex foot.

### MECHANICAL:

Faucet 4" O.C., Drain 1 1/2 IPS.  
1 1/2" adjustable stainless steel hex foot.



**FEATURING  
BOLT-ON  
STAINLESS  
STEEL LEG**



**No Drip DIE  
Formed Edge**



### CONSTRUCTION:

All TIG welded.  
TOP and all exposed surfaces are mechanically polished to a satin finish and sound deadened.  
Countertop edge is polished to a MIRROR finish.  
Double panel door welded & sound deadened.  
Roll formed embossed galvanized hat channels are secured to top by means of structural adhesive and weld studs.  
Legs bolt on to sink base.

Model #	L	Bowl Size L x W x D	Weight
<b>SHK-302</b>	24"	10"x14"x10"	150 lbs.
<b>SHK-180</b>	18"	10"x14"x10"	125 lbs.

W=Front to Back

## CORNER CABINET

### DESIGN:

Furnished with a 5" Back Splash with a 1" return.  
**SHK-2441** is designed to line up with "HK" 5" Back Splash Enclosed Base Tables to create functional work area.  
Door is a double panel design.  
Utility access clearance provided for ease of plumbing installation.  
Furnished with **K-124** 6" extended spout faucet & drain.  
Mitered front permits easy access to sink bowl & faucet.

### MATERIAL:

TOP is 14 gauge stainless steel type "304" series.  
BODY is 18 gauge stainless steel type "430" series.  
Stainless steel basket type drain.  
LEGS are stainless steel and include 1 1/2" adjustable hex foot.

### MECHANICAL:

Faucet 4" O.C., Drain 1-1/2 IPS.  
1 1/2" adjustable stainless steel hex foot.

### CONSTRUCTION:

All TIG welded - Unit body construction  
TOP and all exposed surfaces are mechanically polished to a satin finish and sound deadened.  
Double panel door welded & sound deadened.  
Roll formed embossed galvanized hat channels are secured to top by means of structural adhesive and weld studs.  
Legs bolt on to sink base.



**FEATURING  
BOLT-ON  
STAINLESS  
STEEL LEG**



Model #	W	L	Bowl Size A x B x D	Weight
<b>SHK-1735</b>	17"	35"	14"x10"x10"	215 lbs.
<b>SHK-2441</b>	24"	41"	16"x20"x12"	250 lbs.

W=Left to Right

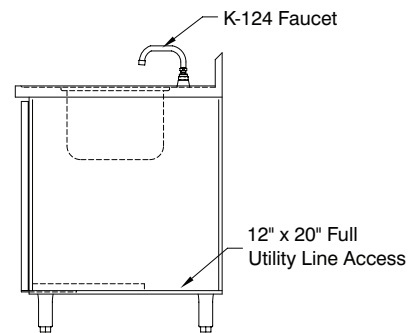
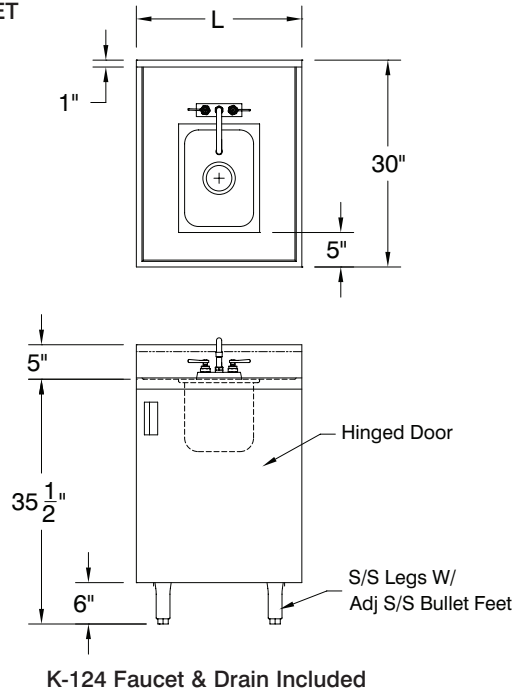
**WARNING:** Equipment that include faucets on this page may contain a chemical known to the State of California to cause cancer, birth defects or other reproductive harm.

# DETAILS and SPECIFICATIONS

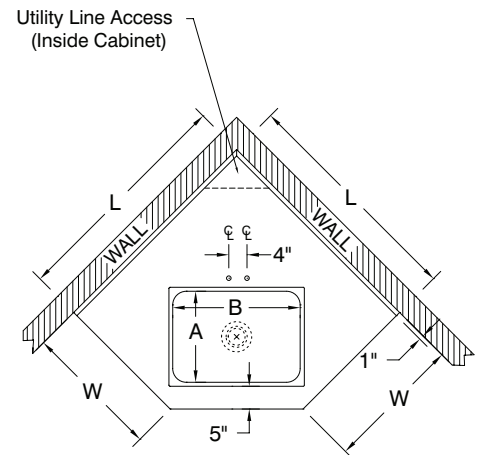
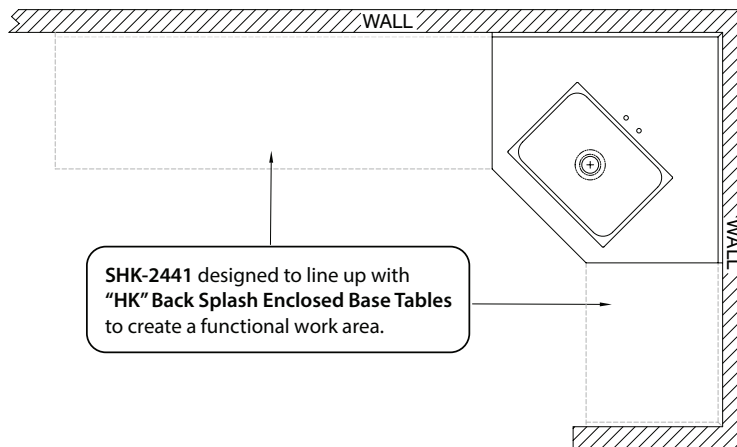
TOL ± .500"

ALL DIMENSIONS ARE TYPICAL

## STANDARD SINK CABINET

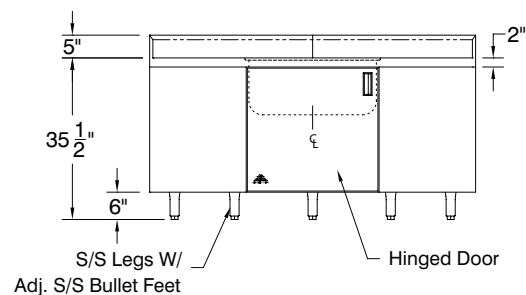


## KORNER SINK CABINET



Model #	W	L	Bowl Size A x B x D	Weight
SHK-1735	17"	35"	14"x10"x10"	215 lbs.
SHK-2441	24"	41"	16"x20"x12"	250 lbs.

W=Left to Right



K-124 Faucet & Drain Included



REF-O

200 Heartland Boulevard, Edgewood, NY 11717-8380

ADVANCE TABCO is constantly engaged in a program of improving our products. Therefore, we reserve the right to change specifications without prior notice.

© ADVANCE TABCO, AUGUST 2018