



K-240 SERVICE FAUCET FOR MOP SINKS



**Click This Link To
View Assembly Sheet**

Item #: _____ Qty #: _____

Model #: _____

Project #: _____

FEATURES:

8" O.C. water supply.

Quarter turn wedge style handles with colored hot & cold indexes.

9.6 GPM/36.3 LPM.

Wall support bracket & pail hook.

Vacuum breaker. Built-in stops.

Garden hose outlet.

MATERIAL:

Brass chrome plated body & spout.

Chrome plated handles.

DIMENSIONS and SPECIFICATIONS

Options & Accessories

**Replacement Vacuum Breaker
Repair Kit For K-240**

K-03



**Replacement Cartridges
For K-240 Faucet***

K-00B (Set of 2)

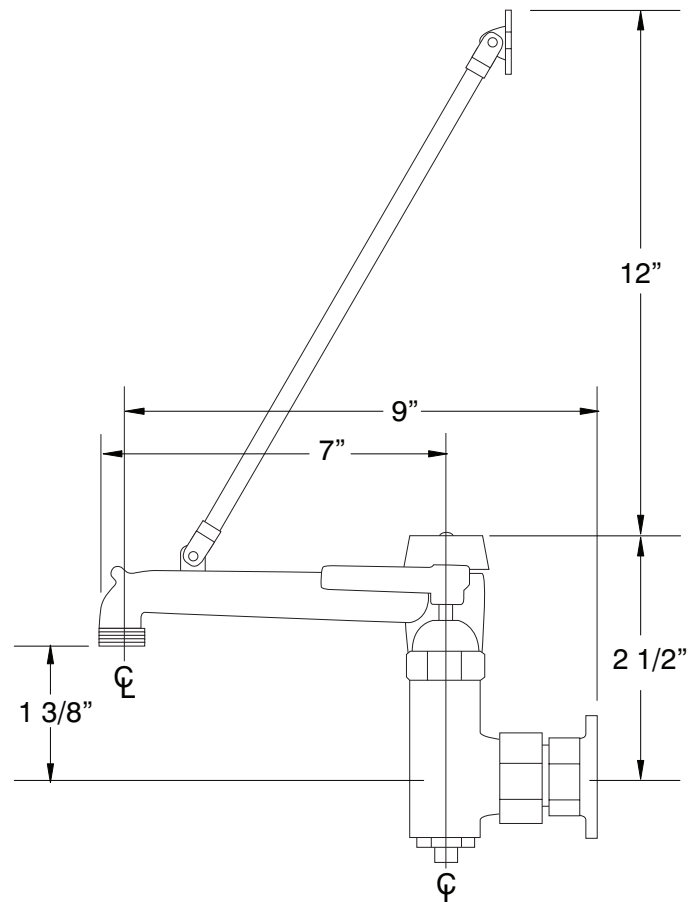


Replacement Handles*

K-00C (Set of 2)



*Can Only Be Used On Faucets Purchased After January 2016.
For Older Faucets, Consult Customer Service.



⚠ WARNING:

Faucet(s) on this page may expose you to chemicals, including lead, that are known to the State of California to cause cancer or birth defects or other reproductive harm. For more info., visit www.p65warnings.ca.gov.



Customer Service Available To Assist You 1-800-645-3166 8:30 am - 8:00 pm E.S.T.

For Orders & Customer Service:

Email: customer@advancetabco.com or Fax: 631-242-6900

For Smart Fabrication™ Quotes:

Email: smartfab@advancetabco.com or Fax: 631-586-2933