

# PIZZA PREPARATION TABLE

**Model: CPA93**

## 93" Pizza Preparation Refrigerator with Solid Doors

Heavy gauge #300 series stainless steel top, stainless steel front and end panels, aluminum interior.

**Certified under NSF-7 to maintain temperatures in 86°F ambient and designed to maintain NSF-7 temperatures in 100°F ambient.**



### Options and Accessories

(upcharge and lead times may apply)

|  |   |
|--|---|
| Stainless steel interior                               | Pan slides  |
| Stainless steel back                                   | Wire rod garnish rack                             |
| Overshelves  | Vision panel lids                                 |
| Add'l epoxy-coated steel shelves                       | Door locks  |
| Stainless steel shelves                                | Adjustable legs                                   |
| Drawers in lieu of full doors                          | Front breathing                                   |
| Drawer in lieu of half door above the condensing unit* | Special electrical requirements (consult factory) |
| Condensing unit left or right                          |   |

\*Drawer section above condensing unit holds (1) 12 x 20 x 6 pan

**Project Name:**

**Model Specified:**

**Location:**

**Item No:**

**Quantity:**

**AIA #:**

**SIS #:**

### Standard Model Features

#### REFRIGERATION SYSTEM

Performance-rated refrigeration system

Environmentally-safe R-134a refrigerant

Unique forced air design utilizes fans (approx. every 12") across the entire back of unit for even distribution of cold

Automatic, electric condensate evaporator

Non-corrosive, plasticized fin evaporator coil

Easily serviceable, slide-out condensing unit

#### CABINET ARCHITECTURE

2" non-CFC polyurethane foam insulation

Spring loaded, self closing doors

Magnetic snap-in door gaskets

Heavy-duty, epoxy-coated steel shelves

19" deep, full length nylon cutting board

Refrigerated section w/door above the condensing unit

Insulated lids

5" casters

#### MODEL FEATURES

Electronic controller w/digital display & hi-low alarm

Ergonomically-friendly raised angle rail

Expansion valve for quick recovery

Built-in, off cycle defrost timer assures optimum coil defrost

Field rehingeable doors

**NOTE:** CPA models come standard with a door above the condensing unit. A drawer above the condensing unit is an option.

**Continental**  
Refrigerator

Toll-Free: 800-523-7138  
Phone: 215-244-1400  
Fax: 215-244-9579

539 Dunksferry Road  
Bensalem, PA 19020  
[www.continentalrefrigerator.com](http://www.continentalrefrigerator.com)

**APPROVAL:**

## Model Specifications

### DIMENSIONAL DATA

|   |                   |
|---|-------------------|
| Net Capacity (cu. ft.)                                  | 32 (906 cu l)     |
| Width, Overall (in.)                                    | 93 (2362 mm)      |
| Depth, Overall (in.)<br>(incl. cutting board & bumpers) | 36 7/8 (937 mm)   |
| Height, Overall (in.) (incl. 5" casters)                | 39 7/16 (1002 mm) |
| Depth, Cutting Board (in.)                              | 19 (483 mm)       |
| Pan Capacity (pans supplied by others)                  | (12) 1/3          |
| Shelf Area (sq. ft.)                                    | 14.2 (1.3 sq m)   |
| No. of Shelves  | 3                 |
| No. of Full Doors                                       | 3                 |
| No. of Half Doors                                       | 1                 |
| Interior Depth (in.)                                    | 27 3/8 (695 mm)   |
| Interior Height (in.)                                   | 26 (660 mm)       |
| Interior Height (in.) (above condenser)                 | 12 1/2 (318 mm)   |
| Interior Width (in.)                                    | 89 (2261 mm)      |

### REFRIGERANT DATA

|                             |      |
|-----------------------------|------|
| Condensing Unit Size (H.P.) | 1/2  |
| Capacity (BTU/Hr)*          | 5260 |

### ELECTRICAL DATA

|                                     |                     |
|-------------------------------------|---------------------|
| Voltage (int'l)                     | 115/60/1 (220/50/1) |
| Fans                                | 6                   |
| Total Amps (int'l)                  | 14.4 (9.1)          |
| 10 ft. Cord/Plug [attached] (int'l) | Yes (No)            |

### SHIPPING DATA

|                       |                  |
|-----------------------|------------------|
| Weight (lbs.)         | 605 (274 kg)     |
| Height - Crated (in.) | 43 3/4 (1111 mm) |
| Width - Crated (in.)  | 95 (2413 mm)     |
| Depth - Crated (in.)  | 47 (1194 mm)     |

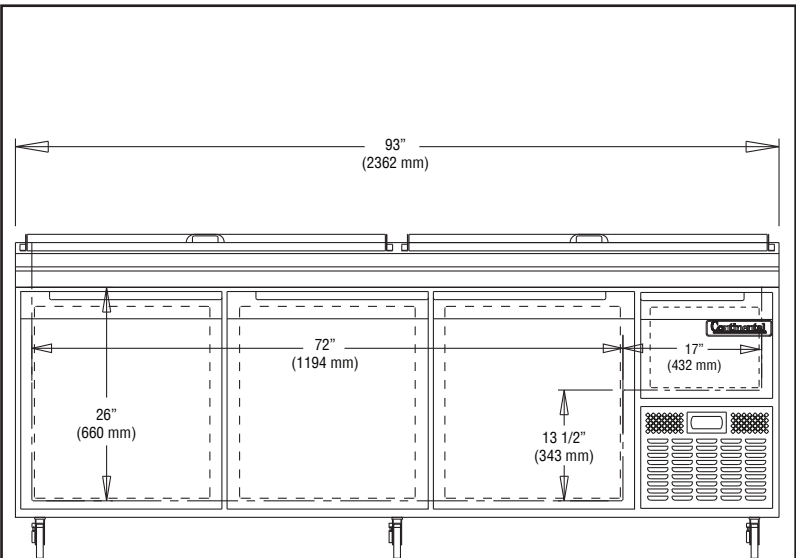
\* Rating @ +25°F evaporator, 90°F ambient

Figures in parentheses reflect metric equivalents rounded to the nearest whole unit.

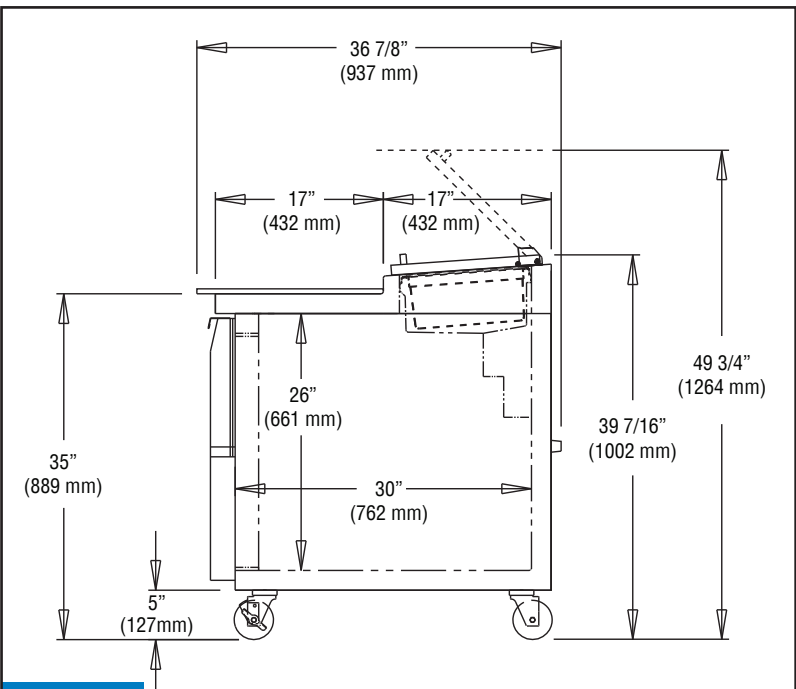


Equipped with one NEMA-5-15P Plug  
(varies by country)

## Model Plan Views



FRONT VIEW



SIDE VIEW

**IMPORTANT NOTE:** If the cabinet is located directly against a wall, a minimum clearance of 3" is required on sides, front and rear.

**Continental**  
Refrigerator

Toll-Free: 800-523-7138  
Phone: 215-244-1400  
Fax: 215-244-9579

539 Dunkserry Road  
Bensalem, PA 19020  
[www.continentalrefrigerator.com](http://www.continentalrefrigerator.com)

Due to our continued efforts in developing innovative products, specifications subject to change without notice.



MADE IN THE U.S.A.

© Copyright 2018. Continental Refrigerator.  
A Division of National Refrigeration & Air Conditioning Products, Inc.