

BTL100 BOWL
MODEL: BTL100B


FEATURES & BENEFITS

- AISI304 Stainless Steel Construction
- 100 Quart Capacity

STANDARD PRODUCT WARRANTY

90 Day Parts Only

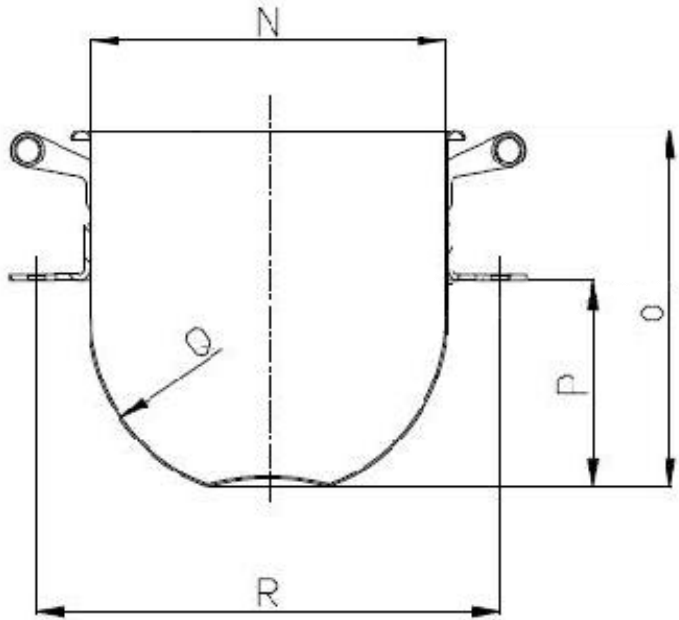
CONSTRUCTION

Stainless Steel

DIMENSIONS & SHIPPING WEIGHT

- N- 19 7/16" (494 mm)
- O- 23 7/8" (606 mm)
- P- 14 1/2" (369 mm)
- Q- 10 1/2" (267 mm)
- R- 22 1/8" (562 mm)

79.8 lbs (36.2 kg)


SHORT SPECIFICATION

Bowl, Planetary Mixer, BTL Series, 100 QT, AISI304 Stainless Steel Construction, 90 Day Defective Parts Warranty