

**REFRIGERATED SELF-SERVICE
HIGH PROFILE
MODEL ERSSHP378SC-5
ERSSHP478SC-5
ERSSHP678SC-5**



Designed with impulse sales in mind. Get maximum return with presentation and value in mind without sacrificing performance. Available in lengths of 3', 4', and 6', and 78" high.

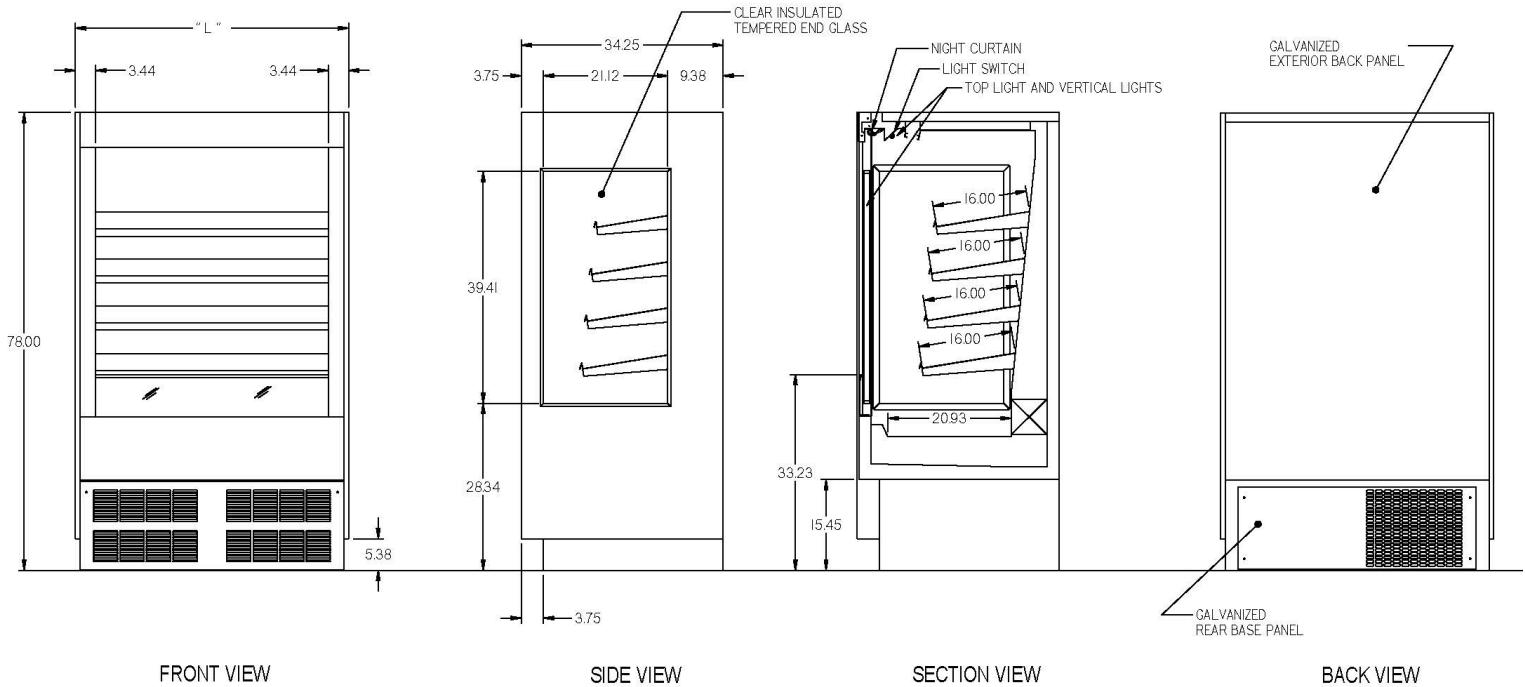
STANDARD FEATURES

- Adjustable black metal shelves with price tag molding. Shelves can be flat or slanted.
- Top mounted LED light and vertical lights.
- Black exterior finish.
- Black powder coated interior.
- Front air intake & discharge.
- Energy saving night curtain.
- Refrigeration controls maintain 38° - 40° F. Note: Case temperature will vary if the air curtain is disrupted.
- Insulated with high-density urethane foam.
- Thermometer.
- Cord and plug (NEMA L14-20P).
- UL Safety and UL Sanitation Listed.

ELEMENTS™ REFRIGERATED SELF-SERVICE MERCHANDISER

OPTIONAL ACCESSORIES:

- ☐ Optional Field Install Caster Kit.



SPECIFICATIONS:

| Model | Dimensions L W H | Shipping Weight (lbs) | Shelving | Self-Contained 3-Wire Plus Ground 208-240/60/1 | NEMA Plug Configuration |
|---------------|----------------------|--------------------------|---------------|--|----------------------------|
| ERSSHP378SC-5 | 36.5" x 34.25" x 78" | 835 | 4 (16" x 34") | 1/2 HP - 10 AMPS | NEMA L14-20P |
| ERSSHP478SC-5 | 47" x 34.25" x 78" | 925 | 4 (16" x 45") | 3/4 HP - 13 AMPS | NEMA L14-20P |
| ERSSHP678SC-5 | 71" x 34.25" x 78" | 1,220 | 8 (16" x 34") | 1 HP - 15 AMPS | NEMA L14-20P |

- Case temperature will vary if the air curtain is disrupted.
- Electrical Requirement - The minimum circuit ampacity and maximum fuse size is 20 amps.
A 208-240 volt, 60 hertz, 1 phase, 3 wire plus ground power supply.
- Refrigerated cases are designed to operate in a maximum of 75° F ambient and 55% relative humidity.
- Due to continuing engineering improvements, specifications are subject to change without notice.



ANSI/NSF 7

Look to Federal for Innovative Merchandising



The Signature of Quality®

Federal Industries
A Standex Company
215 Federal Avenue
Belleville WI 53508-9201
Phone: 800-356-4206
Fax: 608-424-3234
Email: geninfo@federalind.com
Web Site: www.federalind.com