



a Standex company

ITEM: \_\_\_\_\_ PROJECT NAME: \_\_\_\_\_ DATE: \_\_\_\_\_

## CURVED GLASS HORIZONTAL DUAL ZONE CASE

- MODEL**  **CGR3660DZH**  
 **CGR5060DZH**  
 **CGR5960DZH**  
 **CGR7760DZH**



*Sleek curved-glass styling blends with traditional design elements to maximize performance.  
Cases are available in lengths of 36", 50", 59", and 77".*

### STANDARD FEATURES

- Curved glass styling.
- Bottom section refrigerated, top section non-refrigerated.
- Adjustable white wire shelves. Shelves are adjustable up and down and can also be tilted in two positions.
- LED top light and shelf lights.
- Removable sliding rear doors, shelf lights, shelf supports, and shelves.
- Steel base construction with a choice of six standard laminates on base. Other finishes optional.
- Black trim.
- White scratch-resistant display decks.
- UL Safety and UL Sanitation Listed.

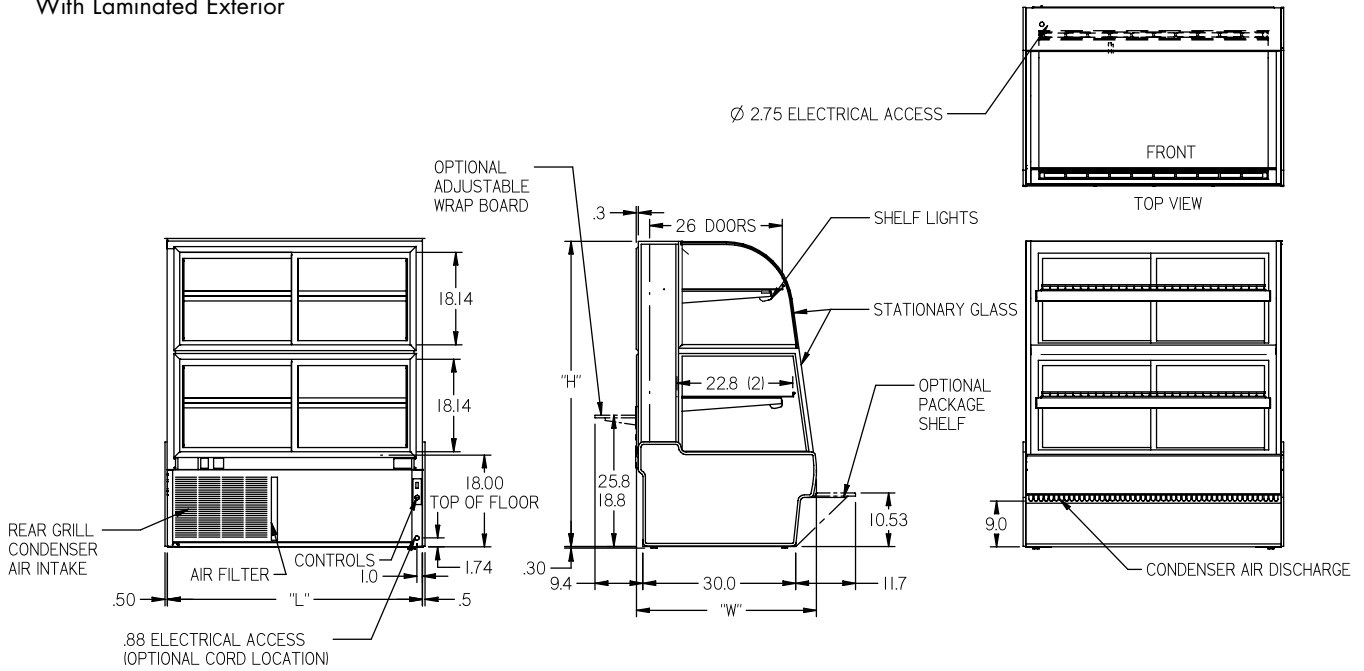
### Added Features for Refrigerated Side

- Condenser air filter on self-contained units.
- Thermometer.
- Condensate evaporator provided for a totally self-contained system.
- Oversized coil and low-velocity fan system maintains high humidity and product freshness.
- Easy clean, rustproof insulated evaporator coil compartment.
- Adjustable temperature control.
- Average case temperature of 38° to 40° is maintained.
- Rear access of the refrigeration system for quick and easy service.
- 134A Refrigerant.

# CURVED GLASS HORIZONTAL DUAL ZONE CASE

## OPTIONAL ACCESSORIES:

- Special Base Finish
- Glass Shelves
- Rear Wrapping Board
- Cord & Plug  
(NEMA 5-15P/ 77" 5-20P)
- Remote Condensing Unit
- Black, Gold, or Chrome Wire Shelves
- Reflective Ends
- White or Mirrored Interior Ends With Laminated Exterior
- Reflective Rear Doors
- Casters/Cord & Plug Included (Self-Contained Models Only)
- Legs
- Package Shelf
- LEDLight Below Package Shelf



## SPECIFICATIONS:

Model	Dimensions L W H	Self-Contained 120/60/1	Remote 120/60/1
<input type="checkbox"/> CGR3660DZH	36.13" x 35.31" x 60"	1/3 HP • 9.0 AMPS	2.3 AMPS
<input type="checkbox"/> CGR5060DZH	50.13" x 35.31" x 60"	1/2 HP • 10.5 AMPS	2.3 AMPS
<input type="checkbox"/> CGR5960DZH	59.13" x 35.31" x 60"	1/2 HP • 12.0 AMPS	2.5 AMPS
<input type="checkbox"/> CGR7760DZH	77.13" x 35.31" x 60"	3/4 HP • 15.4 AMPS	3.3 AMPS

- If a GFCI circuit is required, a GFCI Breaker Must be used instead of GFCI receptacle.
- Refrigerated cases are designed to operate in a maximum environment of 75°F ambient and 55% relative humidity.
- Due to continuing engineering improvements, specifications are subject to change without notice.



*The Signature of Quality*

**FEDERAL INDUSTRIES**  
A Standex Company

215 FEDERAL AVENUE, BELLEVILLE, WISCONSIN 53508-9201

PHONE: 800-356-4206

EMAIL: geninfo@federalind.com

FAX: 608-424-3234

WEBSITE: www.federalind.com

