



The Signature of Quality

FEDERAL INDUSTRIES

A Standex Company

215 Federal Avenue
Belleville, Wisconsin 53508-9201

Phone: 800-356-4206

Fax: 608-424-3234

Email: Geninfo@Federalind.com

Website: Federalind.com

Project Name: _____

Item #: _____

Model #: _____ Qty: _____

Approval: _____

AIA #

SIS #

Non-Refrigerated Self-Serve High Profile Specialty Merchandiser – 78"H X 30"W

Designed with impulse sales in mind. Get maximum return from an attention-grabbing merchandiser and increase profits.



Image for Illustration Only.
Non-Refrigerated Package Goods

Model NSSM678 Shown

OPTIONAL ACCESSORIES

- | | |
|--|--|
| <input type="checkbox"/> Special External Laminate Finish | <input type="checkbox"/> LED Lights Below Shelves |
| <input type="checkbox"/> White Interior (Including Shelving) | <input type="checkbox"/> Rear Side Panel Extensions (6", 152mm) |
| <input type="checkbox"/> Stainless Steel Exterior Finish | <input type="checkbox"/> 2 1/2" (63.5mm) or 4" (101.6mm) Casters Cord Included |
| <input type="checkbox"/> Stainless Steel Interior Back | <input type="checkbox"/> Legs, 6", (152mm) |
| <input type="checkbox"/> Stainless Steel Shelves | <input type="checkbox"/> Skirt with Casters or Legs |
| <input type="checkbox"/> Reflective End Glass | <input type="checkbox"/> Cord and Plug |
| <input type="checkbox"/> Additional Lighted (LED) Shelf | <input type="checkbox"/> Joining Kit for Continuous Line-Ups |
| <input type="checkbox"/> Deli Meat Pegs | <input type="checkbox"/> Removable Security Cover |
| <input type="checkbox"/> Sliding or Hinged Rear Access Doors | |
| <input type="checkbox"/> Roll-up Security Cover (Square End Profile) | |
| <input type="checkbox"/> Square End Profile | |

*Additional options available on the website and price list.

MODEL	DIMENSIONS (Includes End Panels)
<input type="checkbox"/> NSSM378	36 x 30 x 78 (in) 914 x 762 x 1981 (mm)
<input type="checkbox"/> NSSM478	47.25 x 30 x 78 (in) 1200 x 792 x 1981 (mm)
<input type="checkbox"/> NSSM578	59.25 x 30 x 78 (in) 1505 x 792 x 1981 (mm)
<input type="checkbox"/> NSSM678	71.25 x 30 x 78 (in) 1810 x 792 x 1981 (mm)
<input type="checkbox"/> NSSM878	91.5 x 30 x 78 (in) 2324 x 792 x 1981 (mm)

STANDARD FEATURES

Model Features

- Welded powder coated steel base fabrication
- Choice of six standard laminates on exterior
- Black metal front grill and galvanized steel back.
- Silver Trim
- Stainless steel display deck, glass and black interior ends, black interior back panel
- Moisture resistant end panel construction with field replaceable tempered thermo-pane glass

Shelving

- Four tiers of adjustable black metal shelves with price tag molding. Shelves can be flat or slanted downwards at 10°

Lighting

- 3500K LED top light, DLC certified, IP 65 rated

Agency Approvals

- UL, C-UL



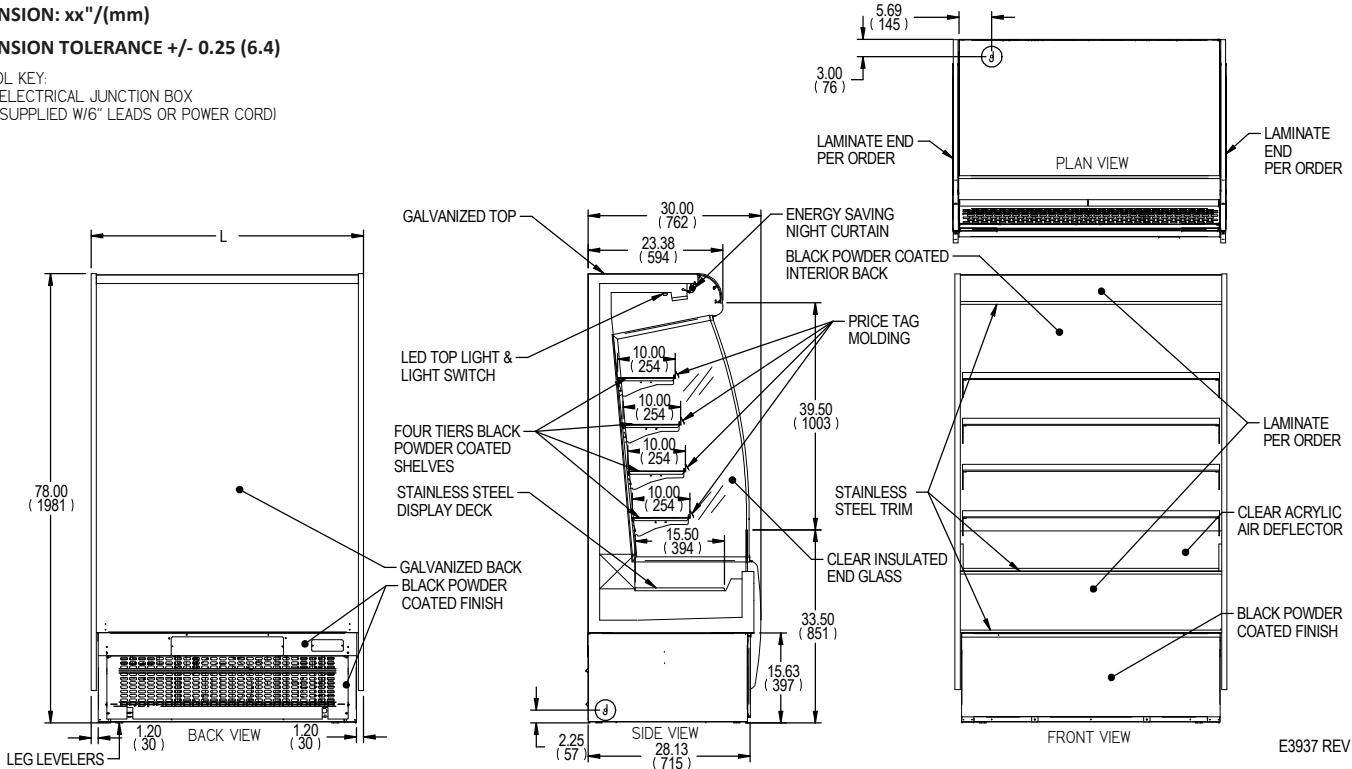
WARRANTY*
One year Parts and Labor
2nd thru 5th year part only
service compressor
(U.S.A. and Canada)

Note: Information is subject
to change at any time. Visit
www.federalind.com for the
most current specs.

AIA #	Non-Refrigerated Self-Serve High Profile Specialty Merchandiser – 78”H X 30”W
SIS #	
Product Specifications	

Zone	Intended Product To Be Displayed	
All	Non-Refrigerated Package Products	

DIMENSION: xx"/(mm)
DIMENSION TOLERANCE +/- 0.25 (6.4)
 SYMBOL KEY:
 (J) ELECTRICAL JUNCTION BOX
 (SUPPLIED W/6" LEADS OR POWER CORD)



MODEL	DIMENSIONS				TIERS	SHIPPING WEIGHT		ELECTRICAL		INTERIOR VOLUME CUFT	OPTIONAL NEMA PLUG
	L	D	H	UNITS		LBS	KILO	VOLTAGE	AMPS		
NSSM378	36	30	78	in	4	685	311	120/60/1	MAX FUSE 15	13.15	5-15P
	914	762	1981	mm							
NSSM478	47.25	30	78	in	4	775	351	120/60/1	MAX FUSE 15	17.40	5-15P
	1200	762	1981	mm							
NSSM578	59.25	30	78	in	4	1010	458	120/60/1	MAX FUSE 15	22.04	5-15P
	1505	762		mm							
NSSM678	71.25	35.25	78	in	4	1070	485	120/60/1	MAX FUSE 15	26.68	5-15P
	1810	762		mm							
NSSM878	91.25	30	78	in	4	1440	653	120/60/1	MAX FUSE 15	34.80	5-15P
	2318	762	1981	mm							

• Due to continuing engineering improvements, specifications are subject to change without notice.



FEDERAL INDUSTRIES
 A Standex Company
 215 Federal Avenue Belleville, Wisconsin 53508-9201

Phone: 800-356-4206
Fax: 608-424-3234
Email: Geninfo@Federalind.com
Website: Federalind.com