



The Signature of Quality®

FEDERAL INDUSTRIES

A Standex Company

215 Federal Avenue Belleville
Wisconsin 53508-9201

Phone: 800-356-4206

Fax: 608-424-3234

Email: Geninfo@Federalind.com

Website: Federalind.com

Project Name: _____

AIA #

Item #: _____

Model #: _____ Qty: _____

SIS #

Approval: _____

Non-Refrigerated Self-Serve High Profile Specialty Merchandiser – 60" H x 30" W

Designed with impulse sales in mind. Get maximum return from an attention-grabbing merchandiser and increase profits.



Model NSSM360 Shown

MODEL	DIMENSIONS <small>(Includes End Panels)</small>
<input type="checkbox"/> NSSM360	36 x 30 x 60.25 (in) 914 x 762 x 1530(mm)
<input type="checkbox"/> NSSM460	47.25 x 30 x 60.25 (in) 1200 x 762 x 1530 (mm)
<input type="checkbox"/> NSSM560	59.25 x 30 x 60.25 (in) 1505 x 762 x 1530 (mm)
<input type="checkbox"/> NSSM660	71.25 x 30 x 60.25 (in) 1810 x 762 x 1530 (mm)

STANDARD FEATURES

Model Features

- Welded powder coated steel base fabrication
- Choice of six standard laminates on exterior
- Black metal front grill and galvanized steel back
- Silver trim
- Stainless steel display deck, glass and black interior ends, black interior back panel
- Moisture resistant end panel construction with field replaceable tempered thermo-pane glass

Shelving

- Two tiers of adjustable black metal shelves with price tag molding. Shelves can be flat or slanted downwards at 10° **Lighting**

- 3500K LED top light
- DLC certified, IP 65 rated

Agency Approvals

- UL, C-UL

OPTIONAL ACCESSORIES

- | | |
|----------------------------------------------------------------------|-----------------------------------------------------------------|
| <input type="checkbox"/> Special Exterior Laminate Finish | <input type="checkbox"/> 2 ½" (63.5 mm) or 4" (101.6mm) Casters |
| <input type="checkbox"/> White Interior (Including Shelving) | <input type="checkbox"/> Legs, 6", (152mm) |
| <input type="checkbox"/> Stainless Steel Exterior Finish | <input type="checkbox"/> Skirt with Casters or Legs |
| <input type="checkbox"/> Stainless Steel Interior back | <input type="checkbox"/> Cord & Plug |
| <input type="checkbox"/> Stainless Steel Shelves | <input type="checkbox"/> Joining Kit for Continuous Line-Ups |
| <input type="checkbox"/> Reflective End Glass | |
| <input type="checkbox"/> Deli Meat Pegs | |
| <input type="checkbox"/> Sliding or Hinged Rear Access Doors | |
| <input type="checkbox"/> Roll-up Security Cover (Square End Profile) | |
| <input type="checkbox"/> Removable Security Cover | |
| <input type="checkbox"/> 3rd Lighted (LED) Shelf | |
| <input type="checkbox"/> Square End Profile | |



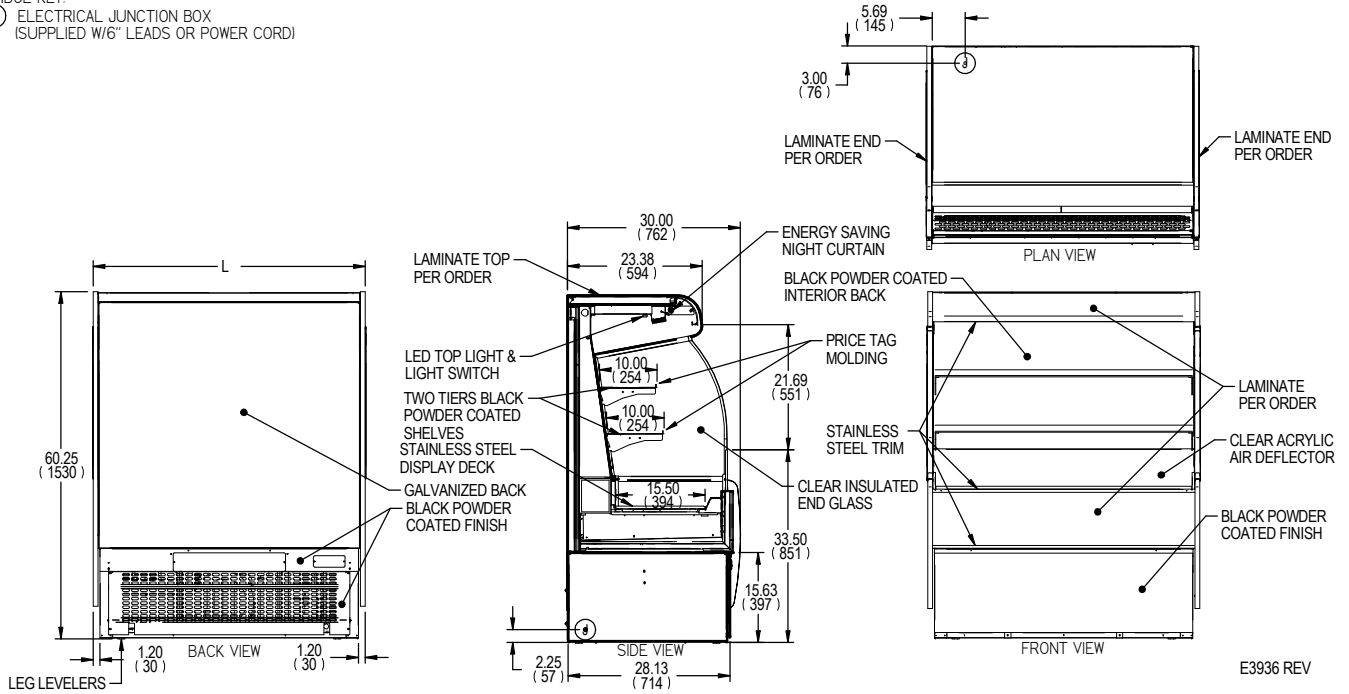
WARRANTY*
One year Parts and Labor
2nd thru 5th year part only
service compressor
(U.S.A. and Canada)

Note: Information is subject to change at any time. Visit www.federalind.com For the most current specs.

AIA #	Non-Refrigerated Self-Serve High Profile Specialty Merchandiser – 60"H X 30"W
SIS #	Product Specifications

Zone	Intended product to be displayed	
All	Non-Refrigerated Package Products	

DIMENSION: xx"/(mm),
DIMENSION TOLERANCE +/- 0.25 (6.4)
 SYMBOL KEY:
 ① ELECTRICAL JUNCTION BOX
 (SUPPLIED W/6" LEADS OR POWER CORD)



MODEL	DIMENSIONS				TIERS	SHIPPING WHT		ELECTRICAL		OPTIONAL NEMA PLUG
	L	D	H	UNITS		LBS	KILO	VOLTAGE	AMPS	CONFIG (SC)
NSSM360	36	30	60.25	in.	2	450	204	120/60/1	MAX FUSE 15	5-15P
	914	762	1530	mm.						
NSSM460	47.25	30	60.25	in.	2	550	249	120/60/1	MAX FUSE 15	5-15P
	1200	762	1530	mm.						
NSSM560	59.25	30	60.25	in.	2	700	317	120/60/1	MAX FUSE 15	5-15P
	1505	762	1530	mm.						
NSSM660	71.25	30	60.25	in.	2	800	363	120/60/1	MAX FUSE 15	5-15P
	1810	762	1530	mm.						

• Due to continuing engineering improvements, specifications are subject to change without notice.



FEDERAL INDUSTRIES
 A Standex Company
 215 Federal Avenue, Belleville, Wisconsin 53508-9201

Phone: 800-356-4206
Fax: 608-424-3234
Email: Geninfo@Federalind.com
Website: Federalind.com