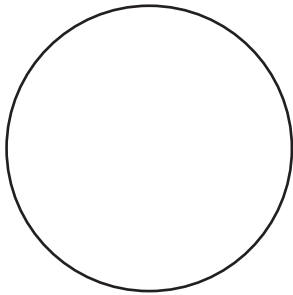




# 30" Round Molded Melamine Tabletop

without umbrella hole



Diameter: 30"

## Product Specifications

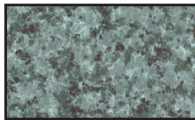
Product Description	Reference Number	Color	UPC Code 014306	Weight Each (lbs.)	Master Pack	Master Pack Volume (cu. ft)
30" Round Molded Melamine Tabletop without hole	99832004	White	925219	19.00	1	1.24
	99832025	Granite Green	925240	19.00	1	1.24
	99832002	Tokyo Stone	925202	19.00	1	1.24
	99832058	Catalan	925264	19.00	1	1.24
	99832076	Aged Oak	925288	19.00	1	1.24
	99832018	Wicker	925233	19.00	1	1.24
	99832008	Teak Decor	925226	19.00	1	1.24
	99832246	Barn White	925295	19.00	1	1.24
	99832071	White Oak	925271	19.00	1	1.24
	99832038	Granite	930251	19.00	1	1.24

## Features & Benefits Warranty: 2 Yrs.

- Trendy marble, granite finish, or deco tops to complement all Grosfillex chairs.
- Hard, smooth molded tabletop made of a molded wood/resin body with a fusion bonded melamine top.
- Stain, burn, scratch and fade resistant.
- Use Grosfillex's wide 4-prong alpha small resin , boomerang small base, Eco-fix base, or Boomerang bar height table base with anti-skid glides for stability. X-one compatible.
- Cleans easily with soap and water.
- Specifically designed and engineered for indoor/outdoor terraces, bars, breakfast areas, concessions, and balconies.
- Customize designs by mixing and matching tabletops and bases.
- Tops and bases sold separately.



White



Granite Green



Tokyo Stone



Catalan



Aged Oak



Wicker



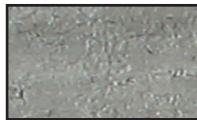
Teak Decor



Barn White



White Oak



Granite

