

Project: _____
 Location: _____
 Item #: _____ Quantity: _____
 Model: _____

MODELS: ERC100	ERC130	ERC200	MERCHANDISERS: Glass Door Merchandiser ERC Series
-----------------------	---------------	---------------	--



IMD-ERC 130



IMD-ERC 200

Benefits

- ✓ This model has been designed for convenient access, fast service and attractive display.
- ✓ Use of environmentally friendly **R290 hydrocarbon** refrigerant and electronic fan motors for an improved energy efficiency.
- ✓ **Lighting.** LED lighting cabinet reduces the energy consumption and provides more lighting in the cabinet.
- ✓ **100% Tested.** All refrigeration units are 100% tested, in helium chambers for refrigerant leak detections.
- ✓ **Certified.** Audited and Certified by **INTERTEK** for compliance with UL 471 and NSF 7. AENOR audited and certified by internationally recognized firm. ISO 9001:2015 (Quality); ISO 14001:2015 (Environmental); OSHAS 18001:2007 (Prevention and Worker Safety).

MODELS	Dimensions (inches) (mm)			Doors	Shelves	Ref.	Ref.Weight (Lbs.) (gr.)	Temperatur e Range (°F) (°C)	Capacit y (Cu.Ft.)	Cond. Unit. H.P.	Case Amps 115V	Net weight (Lbs.) (Kg.)
	W	D	H									
ERC100	54-1/2 (1385)	27-11/16 (704)	79 (2005)	2	4	R290	0.22 (100)	39°F/46 °F (+4°C/+8°C)	39	1 / 2	8,7	
ERC130	54-1/2 (1385)	31-11/16 (804)	79 (2005)	2	4	R290	0.26 (120)	39 °F /46 °F (+4°C/+8°C)	46	3 / 4	9,1	
ERC200	82 (2081)	31-11/16 (804)	79 (2005)	3	4	R290	0.33 (150)	39 °F /46 °F (+4°C/+8°C)	71,7	1	14,8	

ETL LISTED TO UL471 STANDARD AND SANITATION CLASSIFIED TO NSF7 – WE RESERVE THE RIGHT TO CHANGE SPECIFICATIONS WITHOUT PRIOR NOTICE



AUTODESK
REVIT

Infrico USA Corp.
 1409 N.W. 84th Avenue
 Doral, FL 33126
 1.305.777.9599 Office
 1.305.777.9598 Fax

www.infrico.us
sales@infrico.com

APPROVALS: _____ AVAILABLE AT: _____

MODELS: ERC100	ERC130	ERC200	MERCHANDISERS: Glass Door Merchandiser ERC Series
-----------------------	---------------	---------------	--

STANDARD CHARACTERISTICS

➤ Exterior

- Plastic coated steel exterior.
- Compact structure totally injected.

➤ Interior

- Plastic coated steel interior.
- LED lighting.
- Canopy lighting.
- Drain inside the cabinet.

➤ Insulation

- Insulation by free CFC's polyurethane, foam high-pressure injected with density 40 Kg/m³.
- Zero ODP and Low GWP.

➤ Doors

- Sliding doors with automatic closure system.
- Doors with double tempered glass (4-12-4),

➤ Shelves

- (4) inner shelves.
- Shelves easily removable for cleaning.

➤ Refrigeration

- Temperature and defrost regulated by a digital controller.
- Ventilated condensation system.
- Forced evaporation system.
- Stainless steel evaporative tray.
- Evaporators treated with anti-corrosion polyester Epoxy.
- Climate class 4 (30°C, 55%RH).

➤ Electrical

- Electrical connection: 115 V / 1 ph / 60 Hz.



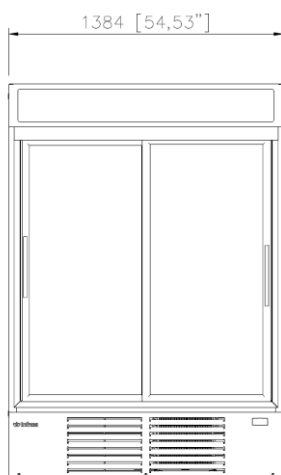
OPTIONAL

- ☐ Additional shelves
- ☐ Electrical connection 220 V / 1 ph / 60 Hz.
- ☐ Electrical connection 220 V / 1 ph / 50 Hz.

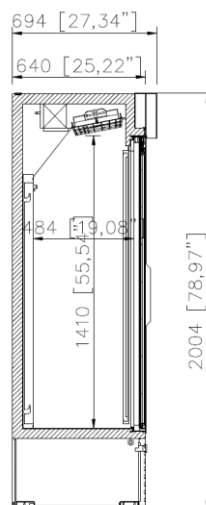
PLAN VIEW

ERC 100

ELEVATION



RIGHT VIEW



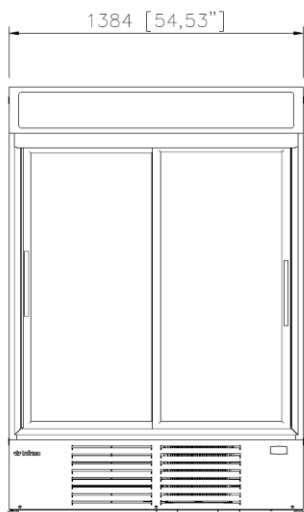
ETL LISTED TO UL471 STANDARD AND SANITATION CLASSIFIED TO NSF7 – WE RESERVE THE RIGHT TO CHANGE SPECIFICATIONS WITHOUT PRIOR NOTICE

MODELS: ERC100	ERC130	ERC200	MERCHANDISERS: Glass Door Merchandiser ERC Series
-----------------------	---------------	---------------	--

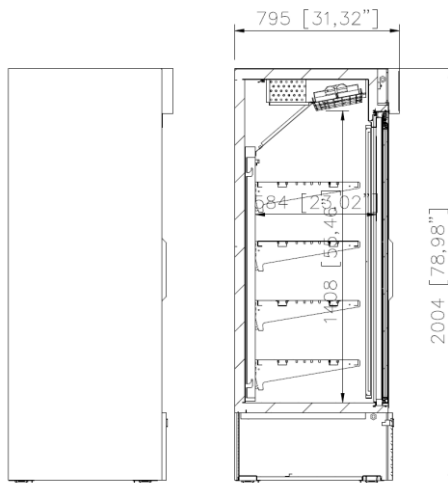
PLAN VIEW

ERC 130

ELEVATION

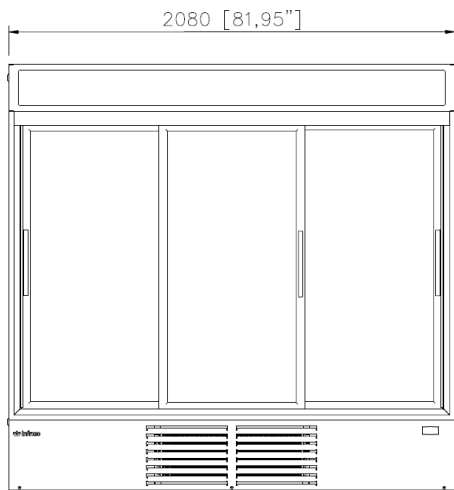


RIGHT VIEW

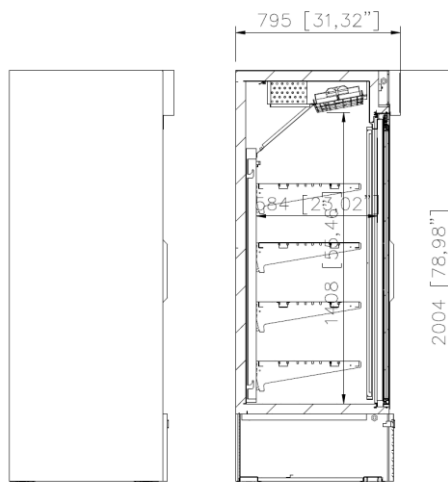


ERC 200

ELEVATION



RIGHT VIEW



ETL LISTED TO UL471 STANDARD AND SANITATION CLASSIFIED TO NSF7 – WE RESERVE THE RIGHT TO CHANGE SPECIFICATIONS WITHOUT PRIOR NOTICE