



**John
BOOS**
Since 1887

ITEM #: _____ QTY: _____

MODEL #: _____

PROJECT NAME: _____

032818

3601 S. Banker St. Effingham, IL 62401 • P.O. BOX 609 • Ph: (888) 431-2667 • Fax: (800) 433-2667

"EUBCS" CHEMICAL STORAGE CABINET

FEATURES:

- FABRICATED 18 GAUGE STAINLESS STEEL SINK BOWL.
10" X 14" X 6" DEEP BOWL
- 4" ON-CENTER SPLASH MOUNT FAUCET HOLES FOR EUBCS-2418
- 4" ON-CENTER DECK MOUNT FAUCET HOLES FOR EUBCS-2421
- FAUCET NOT INCLUDED
- INCLUDES 1-7/8" DRAIN WITH BASKET
- STAMPED RIBBED DRAIN BOARD SLOPED 1/2" TOWARDS SINK
- RAISED MARINE EDGE ON FRONT AND SIDES
- STAINLESS STEEL LEGS WITH ADJUSTABLE BULLET FOOT
- 29.5" WORKING HEIGHT

CONSTRUCTION:

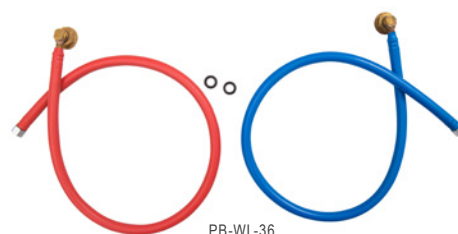
- TOP: STAINLESS STEEL TOPS ARE TIG WELDED, EXPOSED WELDS ARE POLISHED TO MATCH ADJACENT SURFACE #4 POLISHED, SATIN FINISH

MATERIAL:

- TOP: 18 GAUGE TYPE 300 STAINLESS STEEL WITH #4 POLISH, SATIN FINISH
- BODY: 18 GAUGE TYPE 300 STAINLESS STEEL WITH #4 POLISH, SATIN FINISH
- LEGS: STAINLESS STEEL WITH ADJUSTABLE BULLET FOOT



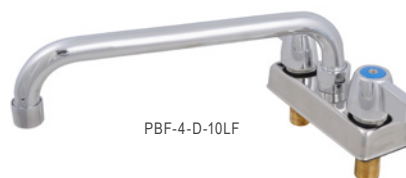
EUBCS-2421



PB-WL-36



PBF-4SM2-10LF



PBF-4-D-10LF

CHEMICAL STORAGE CABINET

MODEL	QTY
EUBCS-2418	
EUBCS-2421	

EUBCS-2418 OPTIONS

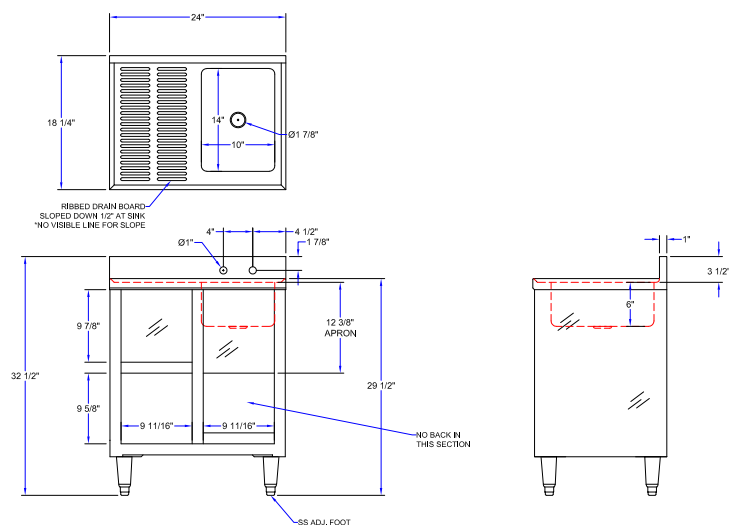
MODEL	QTY
PBF-4SM2-10LF	
PB-WL-36	

EUBCS-2421 OPTIONS

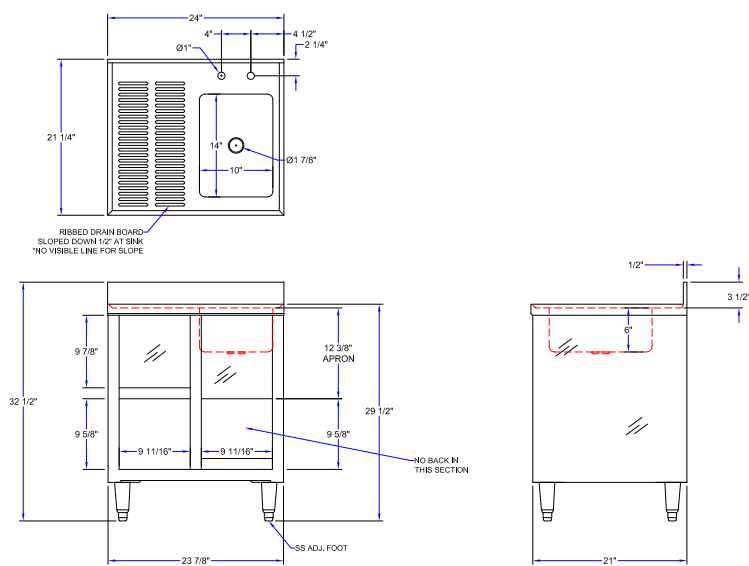
MODEL	QTY
PBF-4-D-10LF	

DETAILED SPECIFICATIONS

EUBCS-2418



EUBCS-2421



CHEMICAL STORAGE CABINET

MODEL	DIMENSION (LXWXH)	BOWL SIZE (LXWXH)	WEIGHT (LBS)
EUBCS-2418	24" X 18-1/4" X 35-1/2"	10" X 14" X 6"	62
EUBCS-2421	24" X 21-1/4" X 35-1/2"	10" X 14" X 6"	57

SOME UNITS SHIP UNASSEMBLED FOR REDUCED SHIPPING COST. ALL DIMENSIONS ARE TYPICAL. TOLERANCE +/- .500"

John Boos & Co. is constantly engaged in a program of improving products and therefore reserves the right to change specifications without prior notice.



Boos

AQ AutoQuotes

3601 S. Banker St. • Effingham, IL 62401 • PO BOX 609 • quotes@johnboos.com

www.johnboos.com

032818

929