



Model: _____ Item #: _____ Date: _____
Project: _____ Qty: _____ Approved By: _____

Self-Contained Draft Beer Coolers

REFRIGERATION



DB60L-SSS-LR shown

Available in 36", 60", 72", and 84" sizes

Optional Accessories

BS-100	Four 6" Stainless Steel Legs
BS-101	Six 6" Stainless Steel Legs (for 72" and 84" models)
BS-102	Four 4" Stainless Steel Legs
BS-103	Six 4" Stainless Steel Legs (for 72" and 84" models)
BS-106	Left Side Stainless Steel Kick Plate
BS-107	Right Side Stainless Steel Kick Plate
BC-130	Four 1" Ultra Low Profile Casters w/ Brakes
BC-131	Six 1" Ultra Low Profile Casters w/ Brakes (for 72" and 84" models)
BC-132	Four 2" Low Profile Casters w/ Brakes
BC-133	Six 2" Low Profile Casters w/ Brakes (for 72" and 84" models)
BC-134	Four 3" Casters with Brakes
BC-135	Six 3" Casters with Brakes (for 72" and 84" models)
BC-136	36" Stainless Steel Front Kick Plate
BC-160	60" Stainless Steel Front Kick Plate
BC-172	72" Stainless Steel Front Kick Plate
BS-184	84" Stainless Steel Front Kick Plate

Standard Features

Electrical

115 V, 1 Phase, 60 Hz. Furnished with 8;-0" plug-in cord, which exits left or right rear of cooler.
NEMA 5-15P plug configuration.
Dedicated 15 Amp circuit recommended.
1 Door (36"): 3.6 Full Load Amps, 1/5 HP
2 Door (60"): 6.0 Full Load Amps, 1/4 HP
2 Door (72"): 6.0 Full Load Amps, 1/4 HP
3 Door (84"): 9.0 Full Load Amps, 1/3 HP

Refrigeration

Self-contained 134A Refrigerant.
30°F - 40°F operating range.
Digital thermostat on front grille.
R290 Hydrocarbon refrigerant available.

Keg Capacity

	36"	60"	72"	84"
1/4 Keg	1	2	3	4
1/2 Keg	1	2	3	4

Interior

20 gauge galvanized walls with coved corners.
Removable corrugated stainless steel floor racks.
Door opening: 29-11/16"H x 19-15/16"W

Exterior

Sides: 20 gauge stainless steel
Front: 20 gauge stainless steel or black vinyl
Back: 20 gauge galvanized steel
Top: 1" stainless steel top with 16" x 8" drainer

Doors

24"W doors with full length stainless steel handles with built-in locks. Heavy duty 18-gauge door jams.

Shelves

NSF epoxy coated shelves. One bottom and two adjustable shelves per door.

Number of Faucets

1 Door (36"): 1
2 Door (60"): 2
2 Door (72"): 3
3 Door (84"): 4

Additional beer tower options available.
Up to 8 taps, four sixtels per door.

Insulation

2" thick foamed-in-place polyurethane

Plumbing

No drain required.
Condensate evaporator pan included
1/2" drain line provided from beer drainer exits bottom front of refrigeration compartment

This equipment is intended for the storage and display of non-potentially hazardous bottle or canned products only.





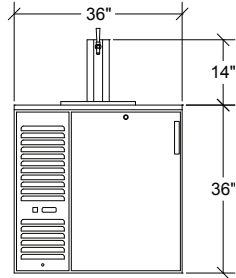
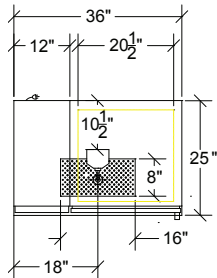
Model: _____ Item #: _____ Date: _____
Project: _____ Qty: _____ Approved By: _____

Self-Contained Draft Beer Coolers

REFRIGERATION

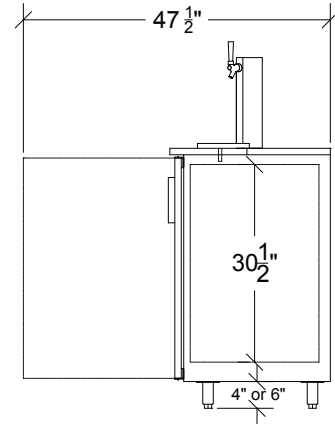
One Door (36")

235 lbs. (250 lbs. with Top)



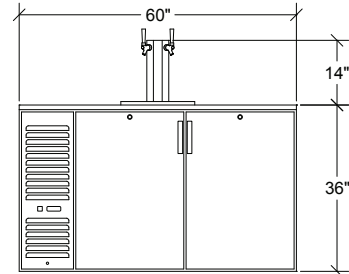
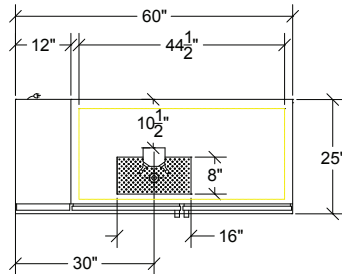
Side View

Applies to all models



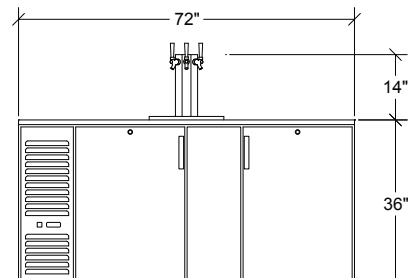
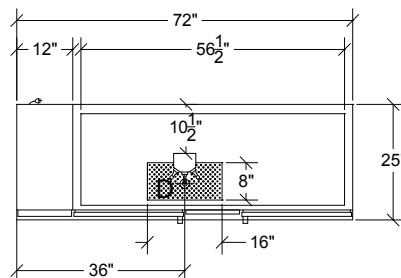
Two Door (60")

360 lbs. (380 lbs. with Top)



Two Door (72")

480 lbs. (505 lbs. with Top)



Three Door (84")

525 lbs. (580 lbs. with Top)

