



ROYAL SERIES UNDERBAR

PASS THRU ICE BIN / CHILLMASTER BEER BIN

MODEL: _____ PROJECT: _____ ITEM #: _____ QTY: _____

PRODUCT IMAGES



KRPT-2436 PASS THRU ICE BIN SHOWN



KR18-CB48 CHILLMASTER BEER BIN SHOWN

STANDARD FEATURES

- **Interior (Both Units)**
20 gauge stainless steel
- **Cold Plate (Pass Thru Only)**
Cast aluminum post mix plate with 10 circuits. Plate is sealed into bottom. Each circuit is 5/16" OD stainless steel tubing. Two full with remainder to be half circuits. Bump and swedge fittings on ends
- **Front Apron**
20 gauge stainless steel clad over 20 gauge galvanized steel
- **Backsplash (Beer Bin Only)**
22 gauge stainless steel
- **Sides**
20 gauge stainless steel
- **Backsplash (Beer Bin)**
20 gauge stainless steel
- **Back and Bottom**
20 gauge galvanized steel
- **Legs**
1 5/8" tubular 16 gauge stainless steel with grey plastic bullet foot
- **Insulation**
Foamed-in-place polyurethane
- **Plumbing**
Cold Plate: 1/2" IPS drain connection
No Cold Plate: 1" IPS drain connection

OPTIONAL ACCESSORIES

- **KR-111** Condiment Tray for Pass Thru
- **KR-112** Stainless Steel Large Divider for Pass Thru
- **KR-115** Stainless Steel Divider for Beer Bin
- **KR-310** Right End Splash for Beer Bin
- **KR-311** Left End Splash for Beer Bin
- **KR-322** Partial Sliding Cover for Pass Thru (Using Bottle Wells)
- **KR-323** Full Sliding Cover for Pass Thru (No Bottle Wells)
- **KR-BR1** Bottle Wells for Pass Thru
- **KR-401** Cap Catcher and Bottle Opener
- **KR-501** Towel Ring
- **KR-503** Crossbraced Casters (30" Working Height)



APPROVED BY:

CERTIFICATIONS:

Due to our commitment to continued product improvement, specifications are subject to change without notice.

Printed in the USA

Krowne Metal Corporation

100 Haul Rd. Wayne, NJ 07470 • Toll Free: (800) 631-0442 • Fax: (973) 872-1129
sales@krowne.com • www.krowne.com • www.facebook.com/KrowneMetal • www.twitter.com/KrowneMetal

Rev. 02/2016
No. 5.9

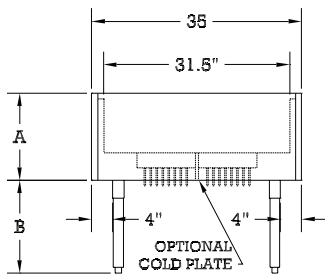
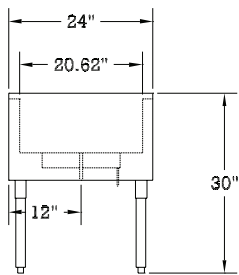
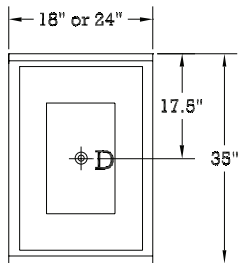


ROYAL SERIES UNDERBAR

PASS THRU ICE BIN / CHILLMASTER BEER BIN

MODEL: _____ PROJECT: _____ ITEM #: _____ QTY: _____

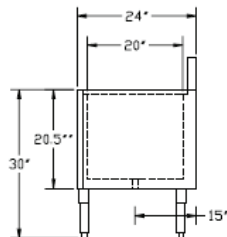
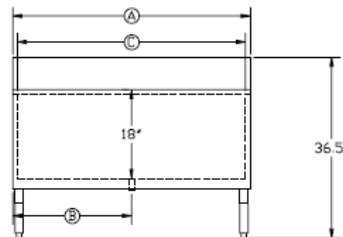
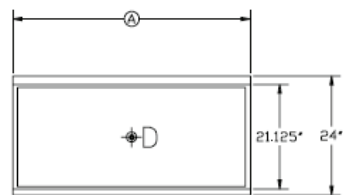
PASS THRU ICE BIN



Model Numbers	Width	Depth	Overall Depth Ⓐ	Leg Size Ⓑ	Cold Plate Circuits	Ice Capacity (lbs.)	Weight (lbs.)
KRPT-1836	1'-6"	2'-11"	11 1/2"	18 1/2"	N/A	130	90
KRPT-1836-10	1'-6"	2'-11"	14 1/2"	15 1/2"	10	130	105
KRPT-2436	2'-0"	2'-11"	11 1/2"	18 1/2"	N/A	175	106
KRPT-2436-10	2'-0"	2'-11"	14 1/2"	15 1/2"	10	175	179

MECHANICAL REQUIREMENTS: Cold Plate: 1/2" IPS drain connection No Cold Plate: 1" IPS drain connection

CHILLMASTER BEER BIN



Model Numbers	Length Ⓐ	Left Side to Drain Ⓑ	Inside Bin Dimensions Ⓒ	Case Capacity	Weight (lbs.)
KR18-CB48	4'-0"	24"	20" x 46"	12	205
KR18-CB60	5'-0"	30"	20" x 58"	15	235

MECHANICAL REQUIREMENTS: 1" IPS drain connection



APPROVED BY: _____

CERTIFICATIONS:

Due to our commitment to continued product improvement, specifications are subject to change without notice.