



# ROYAL SERIES UNDERBAR PASS THRU WORKSTATIONS

MODEL: \_\_\_\_\_ PROJECT: \_\_\_\_\_ ITEM #: \_\_\_\_\_ QTY: \_\_\_\_\_

## PRODUCT IMAGE



KRPT-42RP-10 shown with optional single oversheff,  
bartender side floor panel, & stainless steel end panels

## OPTIONAL ACCESSORIES

- **KR-136** 34" Stainless Steel Single Oversheff
- **KR-236** 34" Stainless Steel Double Oversheff
- **KR-142** 40" Stainless Steel Single Oversheff
- **KR-242** 40" Stainless Steel Double Oversheff
- **KR-154** 52" Stainless Steel Single Oversheff
- **KR-254** 52" Stainless Steel Double Oversheff
- **KR-160** 58" Stainless Steel Single Oversheff
- **KR-260** 58" Stainless Steel Double Oversheff
- **KR-102** Convert Laminated Panels to Stainless Steel
- **KR-110** Stainless Steel Splash for Dump Sinks
- **KR-111** Condiment Tray
- **KR-112** Stainless Steel Divider (Long Way)
- **KR-322** 24" Partial Sliding Cover (Using Bottle Wells)
- **KR-323** 24" Full Sliding Cover (No Bottle Wells)
- **KR-325** 18" Full Sliding Cover (No Bottle Wells)
- **KR-415** Stainless Steel Bartender Floor Panel
- **30-160** Perforated Basket
- **KR-BR1** Bottle Wells for 24" Pass Thru

## STANDARD FEATURES

- **Tray Shelf**  
22 gauge stainless steel with drain and perforated top
- **Dump Sink (Blender)**  
20 gauge stainless steel. 10" x 14" x 7" deep bowl with 1 1/2" drain in center
- **Blender Shelf**  
22 gauge stainless steel
- **Interior (Ice Bin)**  
20 gauge stainless steel
- **Soda Gun Holder**  
18 gauge stainless steel
- **Panels**  
Black laminated side panels
- **Cold Plate (Ice Bin)**  
Cast aluminum post mix plate with 10 circuits. Plate is sealed into bottom. Each circuit is 5/16" OD stainless steel tubing. Two full with remainder to be half circuits. Bump and swedge fittings on ends
- **Front Aprons**  
20 gauge stainless steel clad over 20 gauge galvanized steel
- **Bottom**  
20 gauge galvanized steel
- **Legs**  
1 5/8" tubular 16 gauge stainless steel with grey plastic bullet foot
- **Tubing Access**  
4" x 4" cutout with chase & gun holder
- **Electrical (Blender)**  
Duplex outlet located underneath Blender Shelf
- **Insulation (Ice Bin)**  
Foamed-in-place polyurethane
- **Plumbing**  
**Cold Plate:** 1/2" IPS drain connection  
**Shelves:** 1" IPS drain connection  
**Sink Bowls:** 1 1/2" IPS drain connection
- **Faucet**  
4" center deck mount faucet with ceramic cartridge valves
- **Low Lead Compliance**  
Low Lead Compliant faucets meet California AB-1953 and Vermont S152 standards



### CERTIFICATIONS:

### APPROVED BY:

Due to our commitment to continued product improvement, specifications are subject to change without notice.

Printed in the USA

**Krowne Metal Corporation**

100 Haul Rd. Wayne, NJ 07470 • Toll Free: (800) 631-0442 • Fax: (973) 872-1129  
sales@krowne.com • www.krowne.com • www.facebook.com/KrowneMetal • www.twitter.com/KrowneMetal

Rev. 08/2015  
No. 5.8

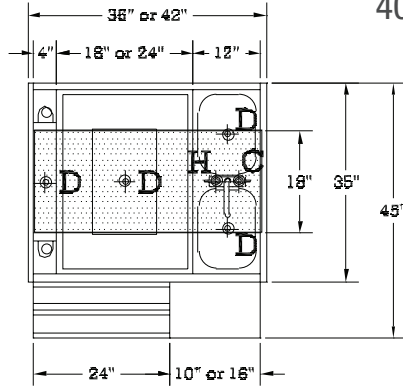


# ROYAL SERIES UNDERBAR PASS THRU WORKSTATIONS

MODEL: \_\_\_\_\_ PROJECT: \_\_\_\_\_ ITEM #: \_\_\_\_\_ QTY: \_\_\_\_\_

## KRPT-36LP-10 / KRPT-42LP-10

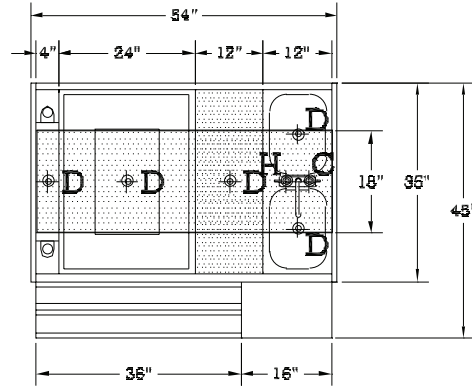
400 lbs./444 lbs.



"RP" Model number is a mirror image

## KRPT-54ALP-10

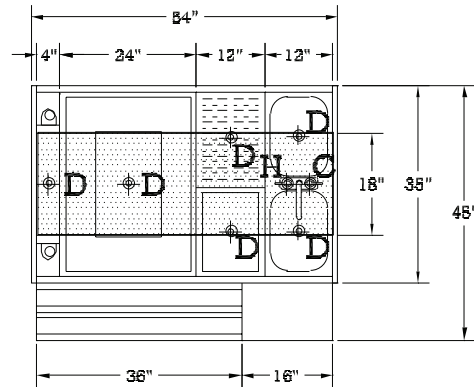
503 lbs.



"RP" Model number is a mirror image

## KRPT-54BLP-10

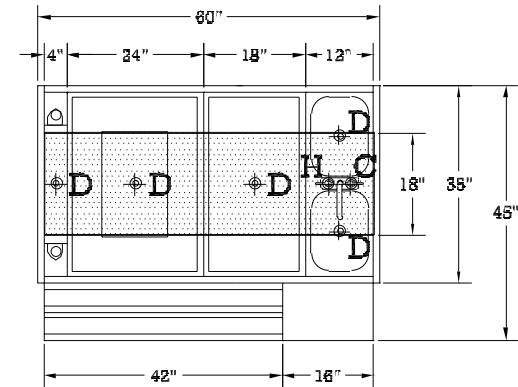
524 lbs.



"RP" Model number is a mirror image

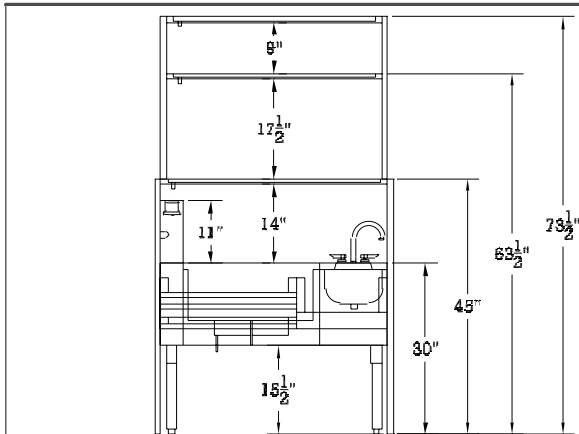
## KRPT-60LP-10

580 lbs.



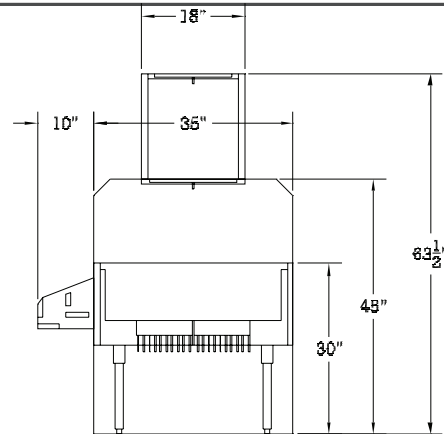
"RP" Model number is a mirror image

## ELEVATION VIEW with DOUBLE OVERSHELF



"RP" Model number is a mirror image

## SIDE VIEW with SINGLE OVERSHELF



"RP" Model number is a mirror image

**MECHANICAL REQUIREMENTS:** 1/2" IPS Hot and Cold Water 1" IPS drain connection without Cold Plate. 1/2" IPS drain connection with Cold Plate. 1 1/2" IPS drain connection on Sink Bowls.

## APPROVED BY:

Due to our commitment to continued product improvement, specifications are subject to change without notice.



## CERTIFICATIONS:

Printed in the USA

## Krowne Metal Corporation

100 Haul Rd. Wayne, NJ 07470 • Toll Free: (800) 631-0442 • Fax: (973) 872-1129  
sales@krowne.com • www.krowne.com • www.facebook.com/KrowneMetal • www.twitter.com/KrowneMetal

Rev. 08/2015  
No. 5.8