



# REFRIGERATION

SERVING THE FOOD INDUSTRY SINCE 1951

## REFRIGERATED TOPPING RAILS WITH STAINLESS STEEL COVER

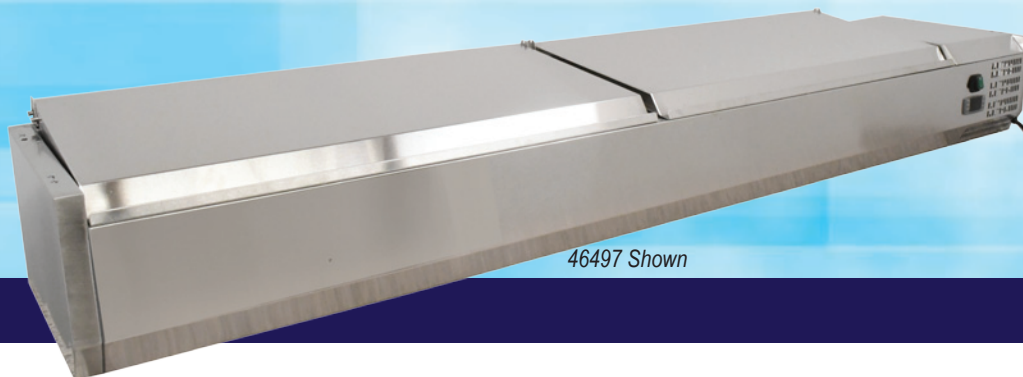
Item: 46497 / 46657 / 46658

Model: RS-CN-0009-PSS / RS-CN-0006-PSS / RS-CN-0004-PSS



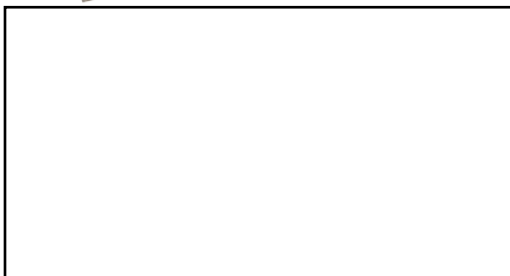
46497 Shown

- Digital LED temperature display
- Stainless steel cover
- Suitable for buffet lines
- Compatible for 2.5" - 4" deep food pans



46497 Shown

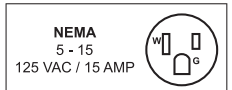
Pans not included



Authorized Dealer



**WARRANTY**  
PARTS AND LABOR

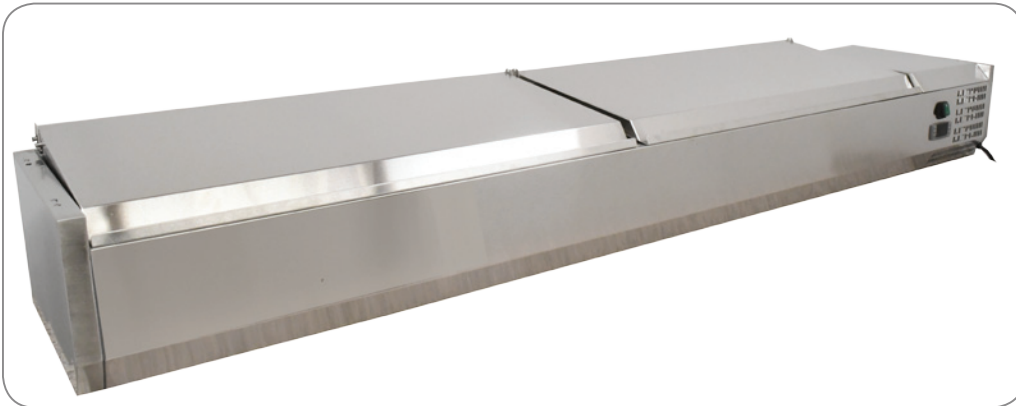


# REFRIGERATION

REFRIGERATED TOPPING RAILS WITH STAINLESS STEEL COVER



46497 is compatible with Item 41145  
(80-inch Granite Top Refrigerated Pizza Prep Table)



NEMA  
5 - 15  
125 VAC / 15 AMP



	79"	59"	47"
ITEM NUMBER	46497	46657	46658
MODEL	RS-CN-0009-PSS	RS-CN-0006-PSS	RS-CN-0004-PSS
CAPACITY	9 x GN 1/3 Pan	5 x GN 1/3 Pan 1 x GN 1/2 Pan	3 x GN 1/3 Pan 1 x GN 1/2 Pan
REFRIGERANT	R600A	R600A	R600A
ELECTRICAL	115V/60Hz	115V/60Hz	115V/60Hz
TEMPERATURE RANGE	+2~°C +8°C   35.6 °F - 46.4 °F	+2~°C +8°C   35.6 °F - 46.4 °F	+2~°C +8°C   35.6 °F - 46.4 °F
NET DIMENSIONS (WDH)	78.7" x 15.5" x 17" 2000 x 395 x 435 mm	59" x 15.5" x 17" 1500 x 395 x 435 mm	47" x 15.5" x 17" 1200 x 395 x 435 mm
GROSS DIMENSIONS (WDH)	80" x 17" x 11" 2040 x 435 x 280 mm	60.6" x 17" x 11" 1540 x 435 x 280 mm	48.8" x 17" x 11" 1240 x 435 x 280 mm
NET WEIGHT	65Kg   143.3 lbs.	22Kg   48.5 lbs	12Kg   26.5 lbs.
GROSS WEIGHT	75Kg   165 lbs.	32Kg   70.5 lbs.	22Kg   48.5 lbs

## OMCAN INC.

Telephone: 1-800-465-0234

Fax: (905) 607-0234

E-mail: sales@omcan.com

Website: www.omcan.com



Follow us to keep up to date with the latest news and offers

