



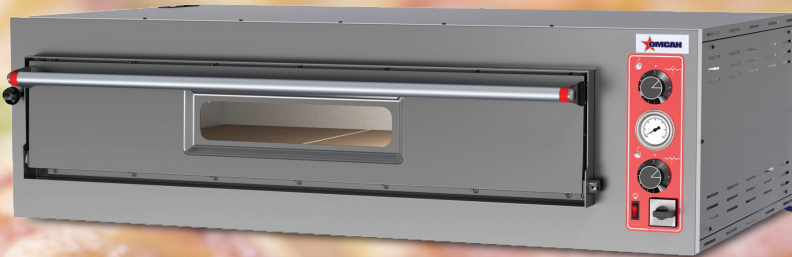
# COOKING EQUIPMENT

SERVING THE FOOD INDUSTRY SINCE 1951

## ENTRY MAX SERIES PIZZA OVENS WITH SINGLE CHAMBER AND DOUBLE CHAMBER

Item #: 40635/ 40636

Model #: PE-IT-0019-S/ PE-IT-0038-D



The Entry Max pizza ovens are practical which are ideal for pizzas, bread and kitchen products.



**WARRANTY**  
PARTS AND LABOR



Authorized Dealer

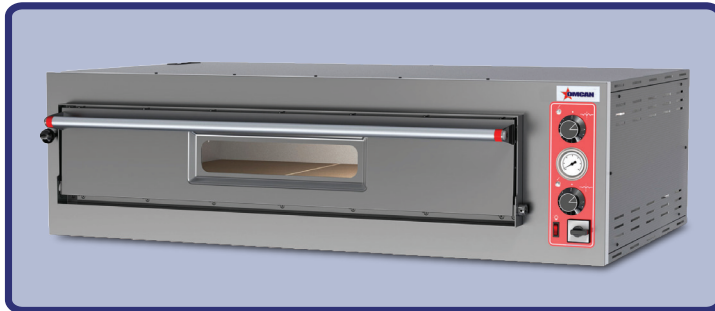
# COOKING EQUIPMENT

ENTRY MAX SERIES PIZZA OVEN WITH SINGLE CHAMBER



## Features:

- Stainless steel front, two mechanical thermostats per chamber, heat resistant, light, main switch for each chamber, stainless steel door with glass and handle (Each chamber is independent)
  - Up to 2 single-chamber oven can be placed on top of each other without the need for an exhauster connection
  - Insulation is evaporated fiberglass
  - Left-sided handles
  - Upon request the machines can be produced in a "full refractory stone" version and for single-phase operation.
- \* Special Order are available for the following upon request: stands, casters, hoods, vents and suction motor*

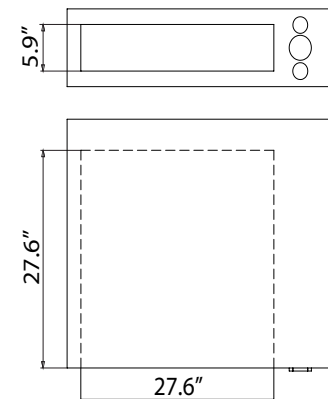
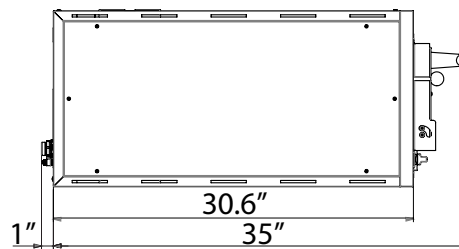
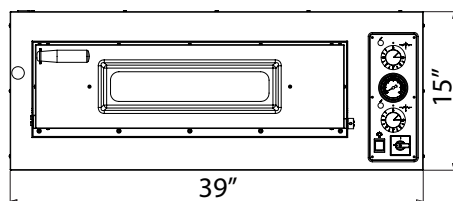


## 5.6 kW Entry Max Series Pizza Oven with Single Chamber

|                                  |  |
|----------------------------------|--|
| ITEM NUMBER                      | 40635  |
| MODEL                            | PE-IT-0019-S                                 |
| MAXIMUM TEMPERATURE              | 842° F / 450° C                              |
| ELECTRICAL                       | 220V / 60 /3                                 |
| POWER                            | 5.6 kW                                       |
| CHAMBER DIMENSIONS (LxDxH)       | 27.6" x 27.6" x 5.9" /<br>700 x 700 x 150 mm |
| FULL REFRACTORY STONE DIMENSIONS | 26.4" x 27" x 5.31" /<br>670 x 685 x 135 mm  |
| EXTERNAL DIMENSIONS (LxDxH)      | 39" x 36" x 15" /<br>990 x 920 x 380 mm      |
| PACKAGING DIMENSIONS (LxDxH)     | 40.2" x 39" x 20.9" /<br>1020 x 990 x 530 mm |
| NET WEIGHT                       | 74 kg / 163 lbs.                             |
| GROSS WEIGHT                     | 77 kg / 170 lbs.                             |

## Related Accessories - sold separately

| ITEM NUMBER | DESCRIPTION                      |
|-------------|----------------------------------|
| 41600       | Stainless steel stand            |
| 41607       | Stainless steel hood             |
| 40645       | Wheels for all pizza oven stands |



|             |             |             |                     |
|-------------|-------------|-------------|---------------------|
|             |             |             |                     |
| max 4 x 12" | max 4 x 13" | max 1 x 18" | max 1 x (24" x 16") |

## OMCAN INC.

Telephone: 1-800-465-0234  
 Fax: (905) 607-0234  
 E-mail: sales@omcan.com  
 Website: www.omcan.com



Follow us to keep up to date with the latest news and offers



### Features:

- Stainless steel front, two mechanical thermostats per chamber, heat resistant, light, main switch for each chamber, stainless steel door with glass and handle (Each chamber is independent)
  - Up to 2 single-chamber oven can be placed on top of each other without the need for an exhauster connection
  - Insulation is evaporated fiberglass
  - Left-sided handles
  - Upon request the machines can be produced in a "full refractory stone" version and for single-phase operation.
- \* Special Order are available for the following upon request: stands, casters, hoods, vents and suction motor*

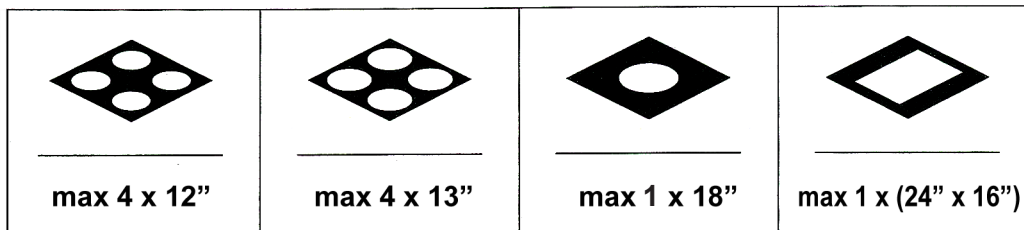
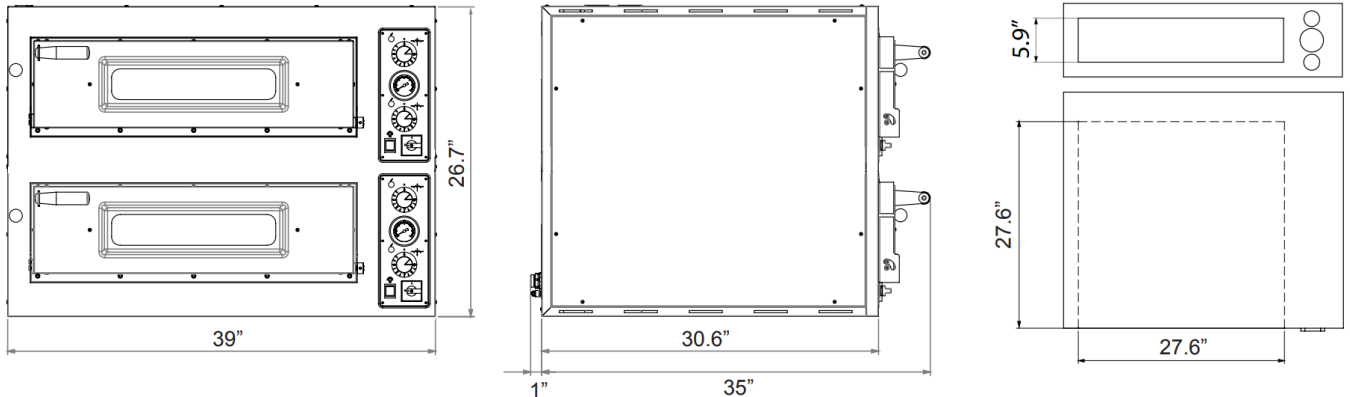


### 11.2 kW Entry Max Series Pizza Oven with Double Chamber

|                                  |   |
|----------------------------------|---|
| ITEM NUMBER                      | 40636   |
| MODEL                            | PE-IT-0038-D  |
| MAXIMUM TEMPERATURE              | 842° F / 450° C                                     |
| ELECTRICAL                       | 220V / 60 /3  |
| POWER                            | 11.2 kW   |
| CHAMBER DIMENSIONS (LxDxH)       | 27.6" x 27.6" x 5.9" (x2) / 700 x 700 x 150 mm (x2) |
| FULL REFRACTORY STONE DIMENSIONS | 26.4" x 27" X 5.31" / 670 x 685 x 135 mm            |
| EXTERNAL DIMENSIONS (LxDxH)      | 39" x 36" x 26.7" / 990 x 920 x 680 mm              |
| PACKAGING DIMENSIONS (LxDxH)     | 40.2" x 39" x 32.3" / 1020 x 990 x 820 mm           |
| WEIGHT                           | 149 kg / 328.5 lbs.                                 |
| GROSS WEIGHT                     | 165 kg / 363 lbs.                                   |

### Related Accessories - sold separately

| ITEM NUMBER | DESCRIPTION                      |
|-------------|----------------------------------|
| 41422       | Stainless steel stand            |
| 41607       | Stainless steel hood             |
| 40645       | Wheels for all pizza oven stands |



## OMCAN INC.

Telephone: 1-800-465-0234  
 Fax: (905) 607-0234  
 E-mail: sales@omcan.com  
 Website: www.omcan.com



Follow us to keep up to date with the latest news and offers

