



ELITE SERIES REFRIGERATION

SERVING THE FOOD INDUSTRY SINCE 1951

26 CU. FT. TWO-SWING DOOR REFRIGERATION

Model: G326 Item 41219

Its attractive design and large exhibition space makes it ideal to display a great variety of products



KEY FEATURES

- **BMAD refrigeration system,** allow to cool down the interior and maintain the temperature range with a minimum energy consumption.
- **30 gauge exterior pre-painted steel,** brings years of duration.
- **Electronic temperature controller,** assures an optimal performance of the cooler, making the product temperature ideal for its consumption.
- **High efficiency glass door,** with a double panel and a low-e film reduces the condensation. Self closing system allow the door to get back to its original position, taking care not to damage it.
- **LED lighting system,** uses a portion of the energy of regular fluorescent lights, and need no replacement for seven years.
- **CFC and HFC free Cyclopentane foam,** is eco-friendly and a high efficiency insulator.
- **Electronic fan motors,** allow a better performance, using only a portion of the energy required by a shaded pole motor.
- **Low maintenance condenser,** prevents dust from blocking air flow and thus saving energy and increasing compressor's life.



Establishing a NEW STANDARD in the commercial refrigeration industry.



COMMERCIAL REFRIGERATOR
AND/OR FREEZER
9242



NSF/ANSI 7 COMMERCIAL REFRIGERATOR
AND/OR FREEZER
20YY



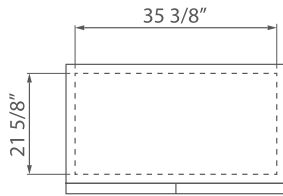
Authorized Dealer

ELITE SERIES REFRIGERATION

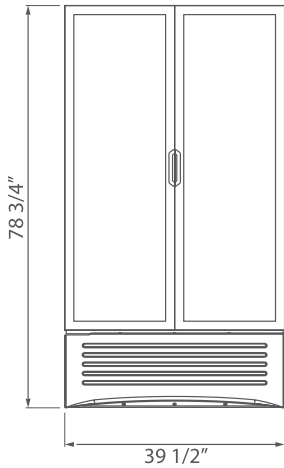
26 CU. FT. TWO-SWING DOOR REFRIGERATION



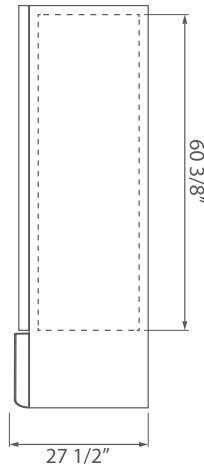
PRODUCT DIMENSION



TOP VIEW



FRONT VIEW



SIDE VIEW

TECHNICAL SPECIFICATIONS

ITEM NUMBER	41219
MODEL	G326
DESCRIPTION	26 cu.ft. Two-Swing Door Refrigeration
VOLUME	26.7 ft ³ / 756.0 liters
DOORS	2
SHELVES	10
SHELF SIZE	15 7/8" x 19 1/2" / 404mm x 494mm
CAPACITY	20 oz. - Total: 300 Front: 5 12 oz. - Total: 840
TEMPERATURE RANGE	0°C - 7°C / 32°F - 44.6°F
ENERGY CONSUMPTION	6.174 kWh/day*
ELECTRICAL	115 V / 60 Hz / 1 Ph
CORD LENGTH	118" / 3000 mm
HORSEPOWER	1/3
AMPS	7.6
WEIGHT	Gross: 324.1 lbs. / 147 kg. Crated: 330.7 lbs. / 150 kg.
INTERNAL DIMENSIONS (WDH)	35 3/8" x 21 5/8" x 60 3/8" / 898 x 548 x 1535mm
DIMENSIONS (WDH)	39 1/2" x 27 1/2" x 78 3/4" / 1000 x 700 x 2000mm

* Energy consumption based on ANSI/ASHRAE Standard 72-2005.



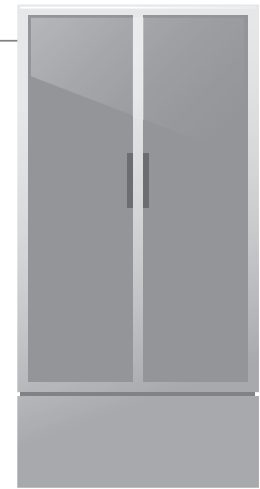
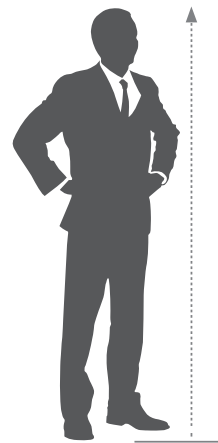
COMMERCIAL REFRIGERATOR
AND/OR FREEZER
9242



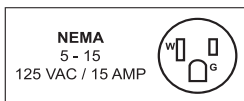
NSF/ANSI 7 COMMERCIAL REFRIGERATOR
AND/OR FREEZER
20YY



5'9" / 1790mm



G3 26



BMAD System (Low maintenance high performance). Dimensions rounded up to the nearest inch or millimeter. Specifications subject to change without notice.

OMCAN INC.

Telephone: 1-800-465-0234

Fax: (905) 607-0234

Email: sales@omcan.com

Website: www.omcan.com



Follow us to keep up to date with the latest news and offers



2015.E.O.E