



# IMMERSION BLENDER XM-72 120/50-60/1

Professional immersion blender. 1.2 Hp / 840 W.



P/N. 3030858



## Built to last

- ✓ Professional performance: capable of carrying out prolonged work without the casing overheating.
- ✓ Life-plus: equipped with a motor which has passed all of the most demanding usage tests.
- ✓ Studied geometry: casing designed to avoid rolling and falling.
- ✓ Ultra-durable arms designed to stand high temperatures in operation.
- ✓ Easy to clean: the arm can be washed under the tap or in the dishwasher.
- ✓ Approved by NSF: guaranteed safety and hygiene.

## INCLUDES

- ✓ Fixed speed motor block.
- ✓ Wall mount.
- ✓ MA-72 mixer arm.

## OPTIONS

- ☐ MA-71 mixer arm.
- ☐ Clamp sliding frame.
- ☐ "Quick fix" clamp.

## ACCESSORIES

- ☐ Motor unit MM-70
- ☐ Quick-Fix bowl clamp
- ☐ Mixer arms MA-70
- ☐ Display stand for XM immersion blenders

## SPECIFICATIONS

Total loading: 1.2 Hp / 840 W  
Maximum recipient capacity: 264 qt  
Motor speed: 12000 rpm  
Blade guard diameter: 4.85"  
Electrical supply: 120 V / 50-60 Hz / 1 ~ (4.7 A)  
Plug: USA (NEMA 5-15P / 2P+G)

### Length

Liquidising arm length: 24.80"  
Total length: 38.19"

Net weight: 11.66 lb  
Noise level (1m.): <80 dB(A)

Crated dimensions  
27.2 x 12.2 x 5.1 "  
Gross weight: 13.9 lbs.

## SALES DESCRIPTION

- ✓ Fixed speed motor block.
- ✓ 24.80" detachable arm.
- ✓ Designed for continuous use in recipients of up to 264 qt.

### All-in-one

- ✓ Professional hand blender designed for carrying out different preparations without the need for add-on tools.
- ✓ Professional Y-blade, made from tempered steel and with a long-duration cutting edge.
- ✓ Fixed speed.
- ✓ Designed to work in recipients of up to 250 l.

### Exclusive TiltStop system

- ✓ Your hand blender will stop in case of a fall or excessive tilt from the vertical position.
- ✓ Moreover, it won't initiate unless it's in the correct usage position.
- ✓ This ensures optimal operation and increases the operator's safety at the workplace.

### Maximum comfort for the user

- ✓ Compact design: logical and manageable size.
- ✓ Ergo-design & bi-mat-grip: external casing made in two materials for an ergonomic hold. Anti-slip grip. Optimum inclination of handle, minimising fatigue.
- ✓ Click-on-arm: detachable arm with fast and secure closure.
- ✓ Hood designed to avoid splashes.
- ✓ Intuitive use: very simple operation. LED warning light in two colours to indicate the status of the machine.
- ✓ Possibility of continuous operation.





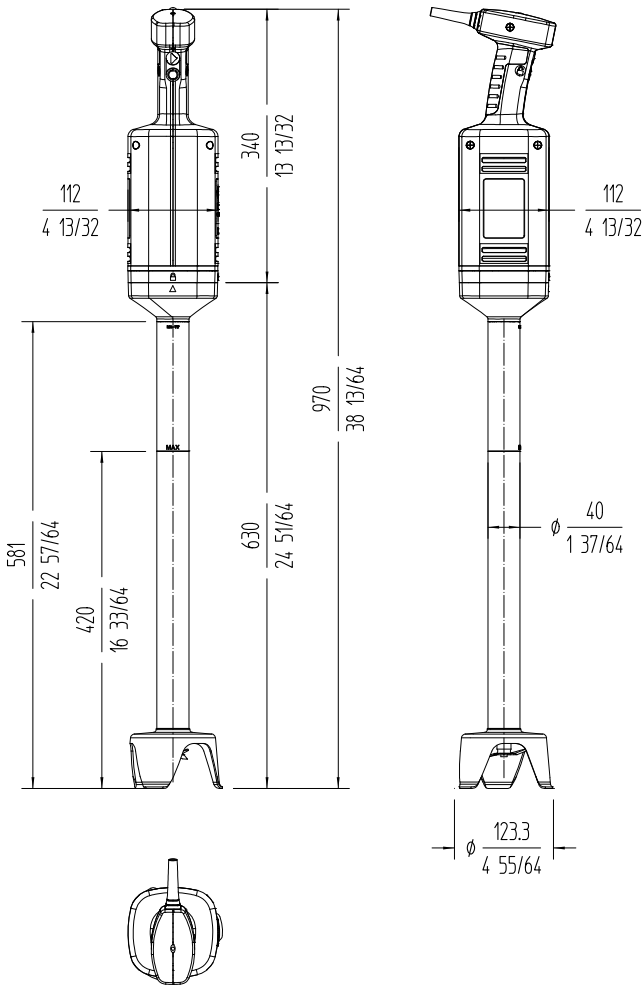
IMMERSION BLENDER XM-72 120/50-60/1

Professional immersion blender. 1.2 Hp / 840 W.

P/N. 3030858



DYNAMIC PREPARATION  
COMMERCIAL HAND BLENDERS



**sammic** | [www.sammic.us](http://www.sammic.us)  
Food Service Equipment Manufacturer

[usa@sammic.com](mailto:usa@sammic.com)  
1225 Hartrey Avenue  
60202-1056 Evanston, IL

phone +1 (224) 307-2232  
toll free +1 844 275 3848



Project	Date
Item	Qty
Approved	

product sheet  
updated 02/03/25