

Platinum

- ☐ PE36N-HHH (Modular Mount)
- ☐ PE36C-HHH (Cabinet Base)

Job _____
Item# _____

Standard Features

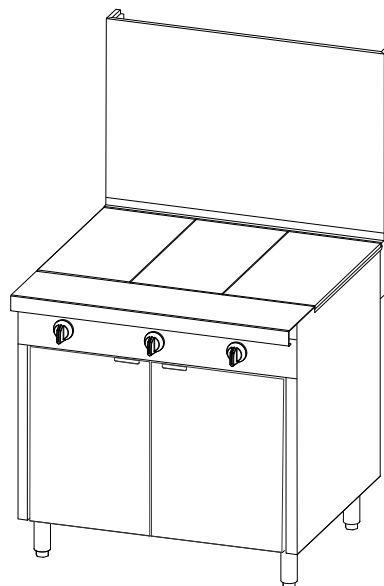
- 36" wide sectional electric range with full-width griddle available with a cabinet base, or as a modular unit (for mounting on countertop, refrigerated or freezer base).
- Three 5.3 kW heating elements with three control knobs
- 1/2" thick plate
- 9-1/4" deep front rail
- Removable stainless steel grease drawer
- Stainless steel front, sides, rear and exterior bottom
- Fully insulated lining and burner box
- 5" high stainless steel flue riser
- Free battery-design assistance
- (1) year limited parts and labor warranty (reference <http://www.southbendnc.com/service.html> for limited warranty details).

Standard Features of Thermostatic Hot Plates **

- Thermostatic control of hot plate surface temperature in the range 250°F to 850°F

Standard Features of Cabinet-Base Models

- Stainless steel cabinet with removable doors that open from the center



Model PE36C-HHH with optional 24" flue riser

STANDARD CONSTRUCTION SPECIFICATIONS

Exterior Finish: Front, sides, rear and exterior bottom constructed of #3 polished 430 and 304 stainless steel.

Range: 24"-wide front-manifold sectional range includes two 5.3 kw hot plate with 1/2" thick stainless steel surface.

Front Rail: 9-1/4" deep front rail

Flue Riser 5" high stainless steel flue riser

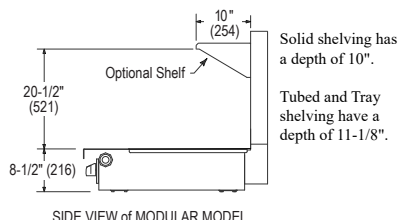
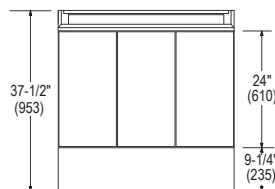
Battery: Unit can be in any position in a battery. If the unit is at the end of the battery, the end side will be solid (rather than have a cover plate over the end of the front manifold).

Legs: 6" stainless steel adjustable legs standard.

Model 24C: Stainless steel cabinet base with two removable doors that open from the center.

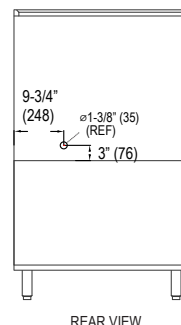
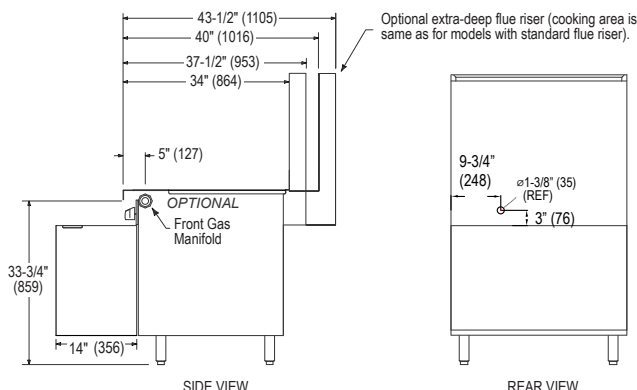
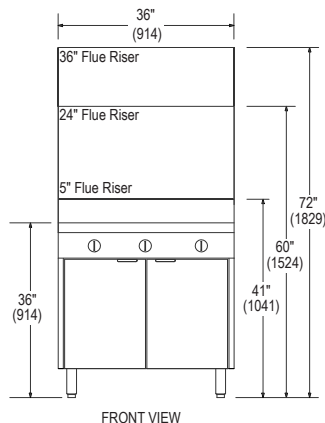


Models: ☐ PE36N-HHH ☐ PE36C-HHH



SHIPPING CRATE DIMENSIONS & WEIGHT					
MODEL	WIDTH	HEIGHT	DEPTH	VOLUME	WEIGHT
PE36N-HHH	45.5" (1156)	23" (584)	55" (1397)	33.3 cu ft (0.94 cu m)	375 lbs (170 kg)
PE36C-HHH	45.5" (1156)	45" (1143)	55" (1397)	65.2 cu ft (1.85 cu m)	600 lbs (272 kg)

Dimensions shown in inches and (millimeters)



UTILITY INFORMATION

MODEL	ELECTRIC ELEMENTS			CURRENT DRAWS (AMPS)		
	OVEN kW	GRIDDLE kW	TOTAL kW	208V	240V	480V
PE36N-HHH	-	(3) 5.3	15.9	44.1	38.1	19.2
PE36C-HHH	-	(3) 5.3	15.9	44.1	38.1	19.2

- ☐ Electrical Voltages:
- ☐ 208 VAC 3 Phase
 - ☐ 240 VAC 3 Phase
 - ☐ 480 VAC 3 Phase

MISCELLANEOUS

- Minimum clearance from noncombustible construction is zero. Minimum clearance from combustible construction is 10" (254 mm) on sides and 12" (305 mm) on rear.
- Installation under a vented hood is recommended.
- Check local codes for fire and sanitary regulations.

NOTICE:

Southbend has a policy of continuous product research and improvement. We reserve the right to change specifications and product design without notice. Such revisions do not entitle the buyer to corresponding changes, improvements, additions or replacements for previously purchased equipment.

OPTIONS and ACCESSORIES

- ☐ External pressure regulator
- ☐ Front rail options:
 - ☐ Cutouts in front rail for sauce pans
 - ☐ 7-1/4" deep front rail (to match old style sectional)
 - ☐ Square belly bar mounted on 7-1/4" deep front rail
- ☐ 1-1/4" front gas manifold
- ☐ 1" rear gas connection
- ☐ Casters (front two casters lock)
- ☐ Cable restraint kit (to restrict movement when on casters)
- ☐ 24" or 36" high flue riser
- ☐ Shelves on flue riser (one on 24" flue riser, one or two on 36" flue riser, 10" deep)
- ☐ Tray or tubular shelves (12" deep)
- ☐ Open-frame base with casters for battery
- ☐ Extra-deep rear-extending flue riser
- ☐ Removable shelf inside cabinet

**INTENDED FOR COMMERCIAL USE ONLY.
NOT FOR HOUSEHOLD USE.**



1100 Old Honeycutt Road, Fuquay-Varina, NC 27526
(919) 762-1000 www.southbendnc.com