

Refrigerated Self-Service Case w/ Rear Door(s)



MODEL SHOWN: HV56RSSRD

- HV38RSSRD
- HV48RSSRD
- HV56RSSRD
- HV74RSSRD

Lengths include 1" end panels
 40"L x 42"D x 51-5/8"H
 50"L x 42"D x 51-5/8"H
 58"L x 42"D x 51-5/8"H
 76"L x 42"D x 51-5/8"H

STANDARD FEATURES

- Breeze™ w/EnergyWise s/c refrigeration
- Clear glass rear sliding doors with inner acrylic plenum
- Clear glass shelves, lighted (LED)
- Compressor air rear intake, front discharge. Toe kick cannot be blocked
- Condensate pan (self-contained refrig. only)
- Flat front panel
- Integrated average product temperature of 40°F or less
- LED 3500K top & shelf lights
- One year parts & labor; 5 year compressor warranty
- Open reach-in front
- Shelving removable and adjustable on 1" centers

Features	Standard	Options
EXTERIOR COLOR	<input type="checkbox"/> Laminated (non-premium) Confirm pattern/grain direction	<input type="checkbox"/> Laminated (premium) Confirm pattern/grain direction <input type="checkbox"/> Stainless steel (includes rear of case)
INTERIOR COLOR	<input type="checkbox"/> Black	<input type="checkbox"/> Stainless steel <input type="checkbox"/> White
REAR EXTERIOR COLOR	<input type="checkbox"/> Painted - White	<input type="checkbox"/> Painted - Black <input type="checkbox"/> Stainless steel (w/stainless ext. only)
TRIM COLOR	<input type="checkbox"/> Black	<input type="checkbox"/> Silver
BASE	<input type="checkbox"/> Levelers	<input type="checkbox"/> 6"H legs <input type="checkbox"/> Casters (n/a with remote)
END PANEL LEFT	<input type="checkbox"/> Full end panel w/mirror interior	<input type="checkbox"/> Case to case glass end <input type="checkbox"/> Cutaway w/ glass <input type="checkbox"/> No end panel (for same case to case connect)
END PANEL RIGHT	<input type="checkbox"/> Full end panel w/mirror interior	<input type="checkbox"/> Case to case glass end <input type="checkbox"/> Cutaway w/ glass <input type="checkbox"/> No end panel (for same case to case connect)
ELECTRICAL CONNECT	<input type="checkbox"/> 6' straight blade power cord (self-cont.)	<input type="checkbox"/> 6' locking power cord (self-cont.) <input type="checkbox"/> Electrical leads (remote)
REFRIGERATION	<input type="checkbox"/> Breeze™ w/EnergyWise s/c refrigeration	<input type="checkbox"/> Note: Remote doesn't incl Conds unit. Floor drain reqd. <input type="checkbox"/> Remote w/thermostat, solenoid & TXV
MISCELLANEOUS		<input type="checkbox"/> Rear door lock <input type="checkbox"/> Second year parts & labor warranty (excludes compressor)
ACCESSORIES		<input type="checkbox"/> Night curtain, retractable, non-locking <input type="checkbox"/> Removable wire security cover, locking

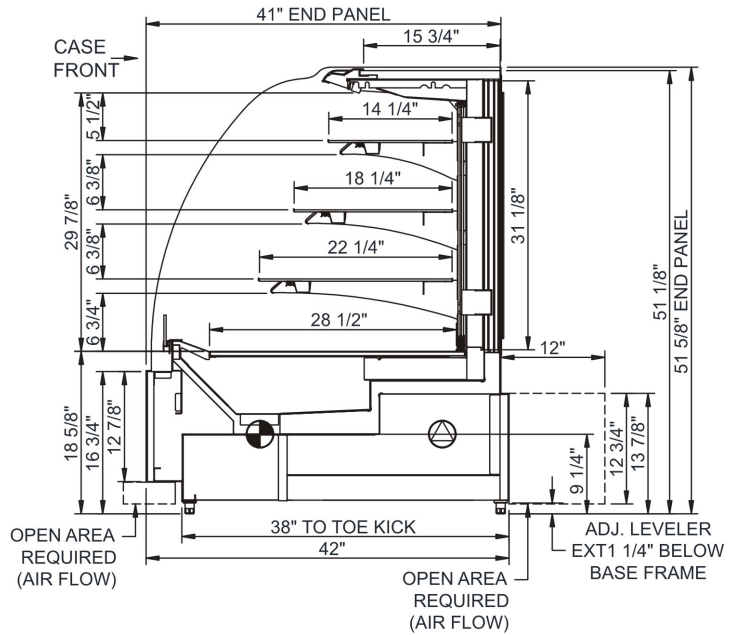
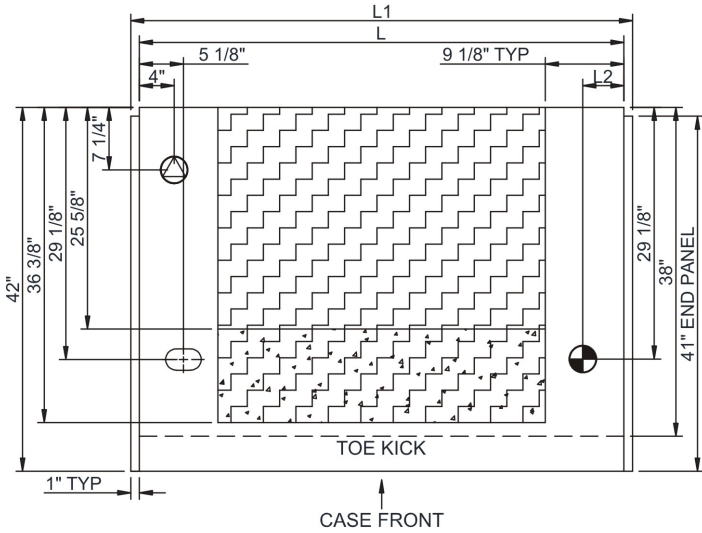
Encore®

Product Specifications

Intended Environment: Type I - Designed to operate in ambient conditions of 75°F with 55% relative humidity unless noted otherwise in system information below.		
Zone	Intended Product To Be Displayed	Warmest Avg Prod Temp ° F
1	Packaged refrigerated products	40

PLAN VIEW

SIDE VIEW



NOTE: ALL DIMENSIONS APPROXIMATE

⊕ ELECTRICAL JUNCTION BOX (SUPPLIED WITH 6" LEADS OR POWER CORD).
 ⊕ LOCATION OF DRAIN TUBE FOR REMOTE REF. ONLY (SUPPLIED WITH 3/4" OR 1 1/2" PVC TUBE).

⊕ REFRIGERATION LINE CONNECTION.
 ⊕ REMOTE FLOOR SINK & UTILITIES ACCESS AREA.

⊕ SELF-CONTAINED CASE SERVICE ACCESS AREA.
 ⊕ DRY CASE SERVICE ACCESS AREA.

Model Technical Specifications

Model	L"	L1"	L2"	System Circuit Volts	Phs	Freq	Amps ***	Watts	Wires	NEMA Plug	SST	Conv. Rack BTUH	Para. Rack BTUH	Est Wt		
HV38RSSRD	38.00	40.00	4.75	Remote(Type I)	Circuit #1	110-120	1	60	1.83	129	2+G	Leads Multiple	24.00	3629	3360	800
				Self-Contained	Circuit #1	110-120	1	60	14.59	1,508	2+G	5-20P or L5-20P	N/A	N/A	N/A	
HV48RSSRD	48.00	50.00	4.75	Remote(Type I)	Circuit #1	110-120	1	60	2.16	223	2+G	Leads Multiple	24.00	4622	4280	900
				Self-Contained	Circuit #1	110-120	1	60	16.00	1,646	2+G	5-20P or L5-20P	N/A	N/A	N/A	
HV56RSSRD	56.00	58.00	4.75	Remote(Type I)	Circuit #1	110-120	1	60	2.45	259	2+G	Leads Multiple	24.00	5357	4960	1,000
				Self-Contained	Circuit #1	120/230V	1	60	12.00	2,028	3+G	14-20P or L14-20P	N/A	N/A	N/A	
HV74RSSRD	74.00	76.00	4.75	Remote(Type I)	Circuit #1	110-120	1	60	3.29	322	2+G	Leads Multiple	24.00	6921	6408	1,200
				Self-Contained	Circuit #1	120/230V	1	60	15.45	2,371	3+G	14-20P or L14-20P	N/A	N/A	N/A	

*** Does not include electric defrost on freezer models.

Important Notes:

- 1) ELECTRICAL NOTE: If GFCI is required, a GFCI breaker MUST be used in lieu of a GFCI receptacle
- 2) 43" Minimum door entry clearance required (Without shipping skid).
- 3) Compressor air ventilation is out the front panel. Front panel cannot be blocked.
- 4) Units are supplied with levelers. They must be adjusted during installation to ensure the unit is level and plumb. Dimensions reflect levelers extended 1 1/4".

WARNING: This product can expose you to chemicals, including Urethane (Ethyl Carbamate), which are known to the State of California to cause cancer and birth defects or other reproductive harm. For more information go to www.P65Warnings.ca.gov.

Regulatory Approvals:	
All Models	Accordance with AHRI Std 1200 ETL Listed to UL 471 ETL Listed to CAN/CSA 22.2 No. 120 ETL Sanitation to NSF 7



In Accordance with
AHRI Std 1200

DOE 2017
Energy Efficiency
Compliant