

Product Specifications

Refrigerated Self-Service Case 32"D



MODEL SHOWN: B4732-QS



- ☐ B3632-QS
- ☐ B4732-QS
- ☐ B5932-QS
- ☐ B7132-QS
- ☐ B8832-QS

Lengths include end panels

- 36-5/8"L x 32-1/4"D x 82-1/2"H
- 47-5/8"L x 32-1/4"D x 82-1/2"H
- 59-5/8"L x 32-1/4"D x 82-1/2"H
- 71-5/8"L x 32-1/4"D x 82-1/2"H
- 88-3/8"L x 32-1/4"D x 82-1/2"H

STANDARD FEATURES

- Breeze~E (Type-II) w/ EnergyWise s/c refrigeration
- Compressor air lower front intake and upper front discharge.
Front panel cannot be blocked
- Condensate pan (self-contained refrigeration only)
- Flat upper front panel & header
- Integrated average product temperature of 40°F or less
- LED 4000K top light(s)
- One piece formed ABS plastic tub (n/a B8832)
- One year parts & labor; 5 year compressor warranty
- Removable deck pans provide complete access to evaporator coil & refrigeration connections
- Shelving removable and adjustable on 1" centers
- Solid back panel, black

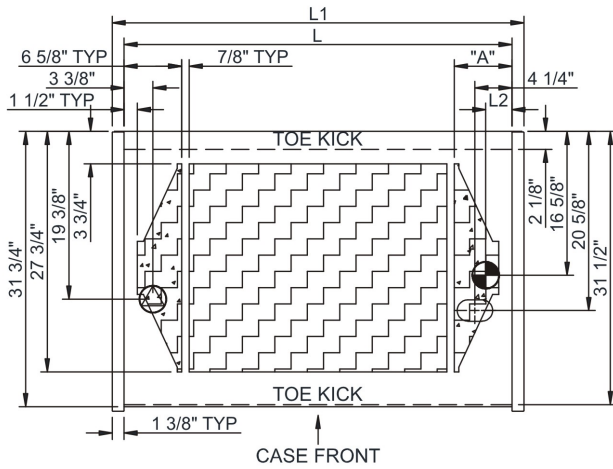
Features	Standard	Options
EXTERIOR COLOR	<input type="checkbox"/> Laminated (non-premium) Confirm pattern/grain direction	<input type="checkbox"/> Laminated (premium) Confirm pattern/grain direction
INTERIOR COLOR	<input type="checkbox"/> Black	
LWR PERFORATED FRNT PANEL	<input type="checkbox"/> Painted - Black	
BASE	<input type="checkbox"/> Casters w/ levelers	
END PANEL LEFT	<input type="checkbox"/> Full end panel w/mirror interior (metal edge matches interior color)	
END PANEL RIGHT	<input type="checkbox"/> Full end panel w/mirror interior (metal edge matches interior color)	
SHELVING	<input type="checkbox"/> Metal shelves, non-lighted	<input type="checkbox"/> Metal shelves, lighted (LED 4000K)
ELECTRICAL CONNECT	<input type="checkbox"/> 6' power cord (base exit)	
REFRIGERATION	<input type="checkbox"/> Breeze~E (Type-II) w/ EnergyWise s/c refrigeration	
MISCELLANEOUS		<input type="checkbox"/> Second year parts & labor warranty (excludes compressor)

Product Specifications

Intended Environment: Type II - Designed to operate in ambient conditions of 80°F and 60% relative humidity unless noted otherwise in system information below.

Zone	Intended Product To Be Displayed	Warmest Avg Prod Temp ° F
1	Packaged refrigerated products	40

PLAN VIEW

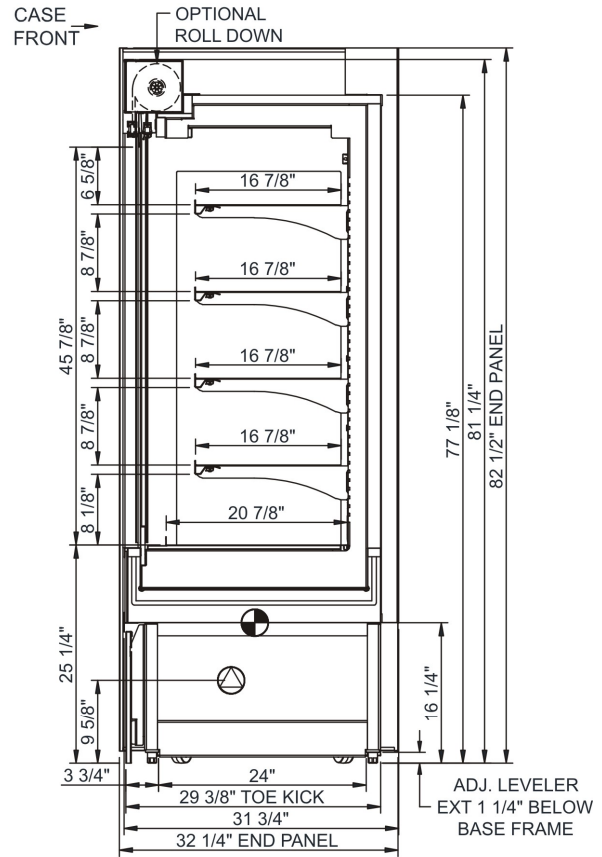


	"A"
B3632	6 5/8"
B4732	6 5/8"
B5932	6 5/8"
B7132	14 1/8"
B8832	17 3/4"

NOTE: ALL DIMENSIONS APPROXIMATE

- ELECTRICAL JUNCTION BOX (SUPPLIED WITH 6\"/>

SIDE VIEW



Model Technical Specifications

Model	L"	L1"	L2"	System Circuit Volts			Phs	Freq	Amps ***	Watts	Wires	NEMA Plug	SST	Conv. Rack BTUH	Para. Rack BTUH	Est Wt
B3632-QS	N/A	36.63	3.13	Self-Contained	Circuit #1	110-120	1	60	16.00	1,480	N/A	5-20P or L5-20P	N/A	N/A	N/A	850
B4732-QS	N/A	47.63	3.13	Self-Contained	Circuit #1	208-240	1	60	10.23	1,923	2+G	6-20P or L6-20P	N/A	N/A	N/A	900
B5932-QS	N/A	59.63	3.13	Self-Contained	Circuit #1	208-240	1	60	12.00	2,310	2+G	6-20P or L6-20P	N/A	N/A	N/A	1,100
B7132-QS	N/A	71.63	3.13	Self-Contained	Circuit #1	208-240	1	60	16.00	3,199	2+G	6-20P or L6-20P	N/A	N/A	N/A	1,200
B8832-QS	N/A	88.38	3.13	Self-Contained	Circuit #1	208-240	1	60	20.52	3,114	2+G	6-30P or L6-30P	N/A	N/A	N/A	1,550

*** Does not include electric defrost on freezer models.

Important Notes:

- 1) ELECTRICAL NOTE: If GFCI is required, a GFCI breaker MUST be used in lieu of a GFCI receptacle
- 2) Performance issues (product temperatures, water on floor, etc.) caused by adverse conditions are not covered by warranty.
- 3) Keep unit at least 15' from exterior doors, overhead HVAC vents, or any air curtain disruption.
- 4) End panels must be tightly joined or kept at least 6" away from any structure to prevent condensation.
- 5) Do not expose unit to direct sunlight or any heat source (ovens, fryers, etc.).
- 6) Tile floors, low ceilings, or small rooms will increase noise level.

⚠ WARNING: This product can expose you to chemicals, including Urethane (Ethyl Carbamate), which are known to the State of California to cause cancer and birth defects or other reproductive harm. For more information go to www.P65Warnings.ca.gov.

Regulatory Approvals:

All Models
 Accordance with AHRI Std 1200
 ETL Listed to UL 471
 ETL Listed to CAN/CSA 22.2 No. 120
 ETL Sanitation to NSF 7



In Accordance with
AHRI Std 1200

DOE 2017
 Energy Efficiency
 Compliant