

VALYR™

BY STRATA GPO

Project Name: _____

Location: _____

Item #: _____

Qty: _____

VALYR 36" Heavy Duty Gas Countertop Charbroiler

VALCTC-36



A great choice for demanding commercial kitchens with limited space, the 36-Inch, Valyr's Heavy Duty Gas Charbroiler is ideal for grilling burgers, hot dogs, sausages, and more. Space efficient and designed for heavy-duty operation, the Stainless Steel frame is able to withstand the toughest kitchen settings. Each cast-iron burner produces 20,000 BTU/hour, with one cast-iron burner for every 6 inches of grate width. The unit comes standard with four (4) 5-inch adjustable legs, separate gas valves for each burner with standing pilot lights, and a 3/4-inch rear NPT gas inlet.

FEATURES AND CONSTRUCTION

- The perfect choice for grilling burgers, hot dogs, chicken, vegetables, sandwiches and more
- Compact 36" countertop design is space efficient
- Rugged stainless steel frame withstands heavy, long-term use in tough kitchen environments
- Features 6 cast-iron burner controls
- Each stainless steel burner produces 20,000 BTU/hour, with one cast iron burner every 6" grate width
- Includes a removable steel drip tray for easy cleaning
- Comes standard with four (4) 5-inch adjustable legs
- Separate gas valves for each burner with standing pilot lights
- 3/4-inch rear NPT gas inlet
- Set up for use with Natural Gas (NG) and is field convertible to Liquid Propane (LPG)

3RD PARTY APPROVALS



Intertek



Intertek

WARRANTY (USA / CANADA)

1 Year Limited Warranty



INCLUDED COMPONENTS

- Charbroiler, Regulator, Instruction Manual, Conversion Kit, Drip Tray

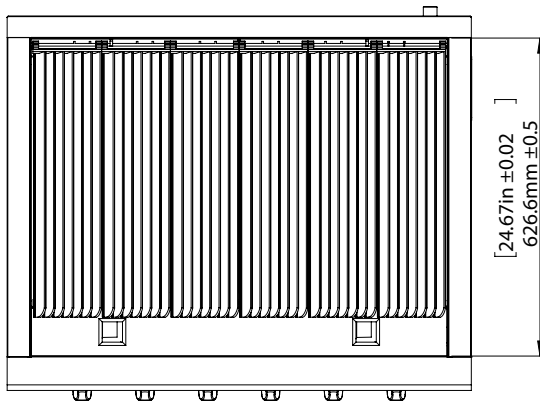
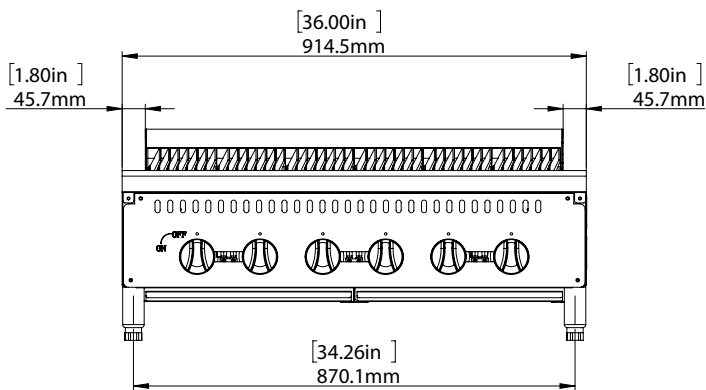


VALYR™
BY STRATA GPO

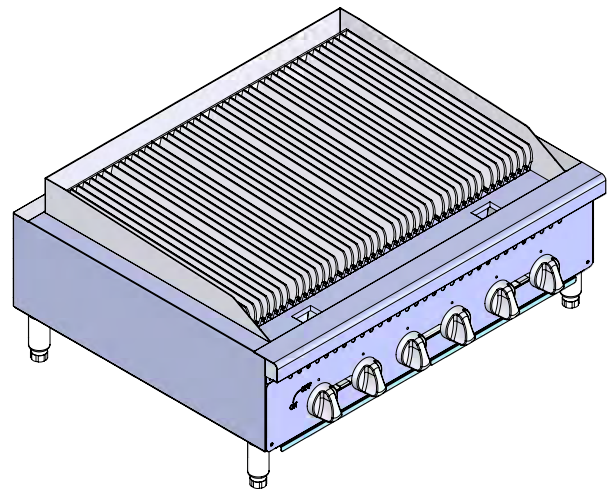
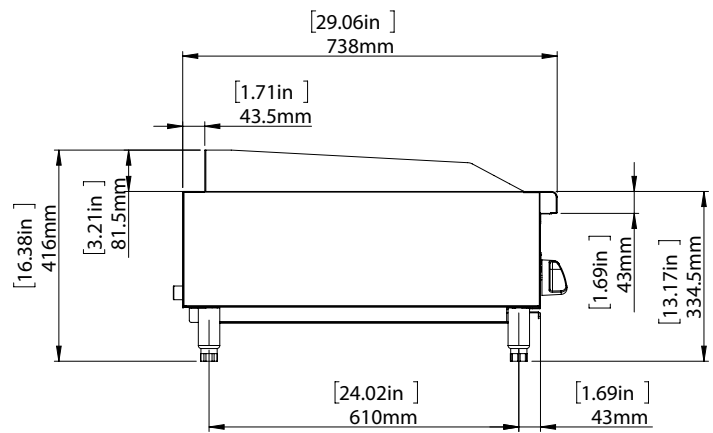
VALYR 36" Heavy Duty Gas Countertop Charbroiler

VALCTC-36

FRONT



SIDE



TOP

Gas

Ignition Type	Total BTU/hr	Total Number of Burners	Cooking Surface	Number of Drip Trays	Assembled Dimensions	Item Weight lbs	Shipping Weight lbs
Manual	120000	6	Cast Iron	1	32.67" x 36.00" x 60.33"	274.5	377.0

ADDITIONAL INFORMATION

- Liquid Propane (LP) or Natural Gas (NG) units available. Field convertible from LP to NG and vice versa. Electricity not needed.
- Minimum supply pressure is 4" W.C. for natural gas and 10" W.C. for propane.
- Gas powered appliances must always be indoors, under an approved exhaust system with grease removal filters and a fire protection system.

Due to periodic changes in designs, methods, procedures, policies and regulations, the specifications contained in this document are subject to change without notice. While we exercise good faith efforts to provide information that is accurate, we are not responsible for errors or omissions in information provided or conclusions reached as a result of using the specifications. By using the information provided, the user assumes all risks in connection with such use.

03.14.25