

## STANDARD FEATURES

### ⌘ DURABLE STAINLESS STEEL

Our tables boast a sturdy stainless steel exterior and interior finish and galvanized back panel provides strength and durability.

### ⌘ ERGONOMICALLY DESIGNED SOLID DOORS

Standard doors come with easy grip handles and self closing/120 ° stay open door feature, working together for customer convenience.

### ⌘ MAGNETIC DOOR GASKET

Built of one piece, the gasket is removable without tools for ease of cleaning and replacement. Door's in step design gives added protection to the gasket.

### ⌘ EFFICIENT REFRIGERATION SYSTEM

Factory engineered oversized and balanced refrigeration system. CFC-free R-134A Refrigerators maintain temperature from 33°F to 38°F. Forced air design underneath pans to keep products fresh.

### ⌘ FRONT BREATHING

Allows unrestricted placement of the unit.

### ⌘ HIGH DENSITY POLYURETHANE INSULATION

2" Ecomate® CFC-free polyurethane insulation foamed in place for extra strength and energy efficiency, while being environmentally friendly with zero ozone depletion potential (ODP) and zero global warming potential (GWP).

### ⌘ INSULATED LIDS

Removable insulated lids keep food fresh and cold by reducing condensation.

### ⌘ REVERSIBLE & EASY CLEANING CUTTING BOARD

This 19" deep cutting board provides ample & comfortable operation space. Made of white polyethylene, it is also full length removable and reversible for durability and easy cleaning.

### ⌘ STANDARD WITH FULL SETS OF 1/3rd PANS, 6" DEEP

### ⌘ SHELVES ON RAIL SYSTEM THAT CAN ALSO ACCOMMODATE (2) 12" X 20" FOODSERVICE PANS AND 18" X 26" SHEET PAN

Pans sold separately.

## OPTIONS & ACCESSORIES

Additional epoxy coated shelves / 2.5" Casters / Universal tray slides (pair) for 18" x 26" pans. / 6" Adjustable stainless steel legs / 220V-50 cycles- 1 phase



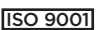
APTP-46



APTP-67



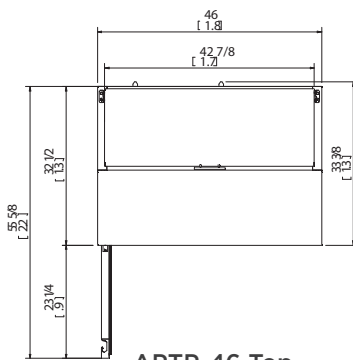
APTP-93



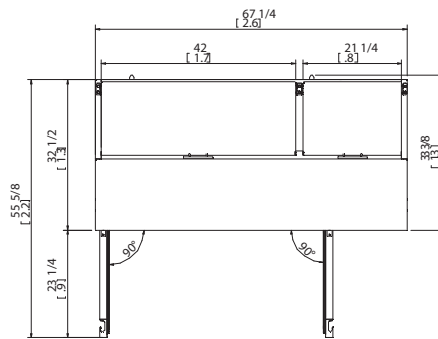
MODEL	DOORS	TOP PANS	SHLVs.	AMPS	HP	VOLTAGE	NEMA PLUG	CORD LENGHT	CABINET DIMENSIONS			SHIPPING	
									L	D*	H**	Wt.	Cubes
REFRIGERATOR													
APTP-46	1	6	2	5.4	1/4	115/60/1	5-15P	8'	46"	36-1/8"	39-1/8"	328	63
APTP-67	2	9	4	6.5	1/3	115/60/1	5-15P	8'	67-1/4 "	36-1/8"	39-1/8"	446	73
APTP-93	3	12	6	6.5	1/3	115/60/1	5-15P	8'	93"	36-1/8"	39-1/8"	556	92

\*Depth does not include 1" bumper

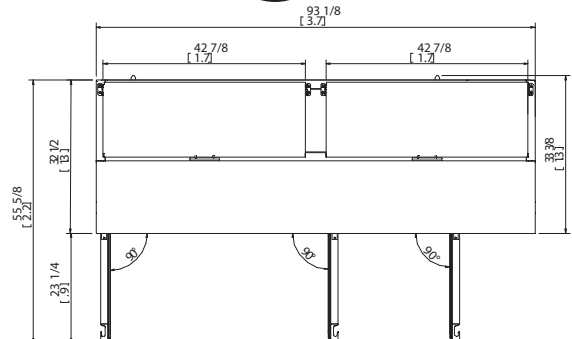
\*\*Height does not include 6" overall for casters



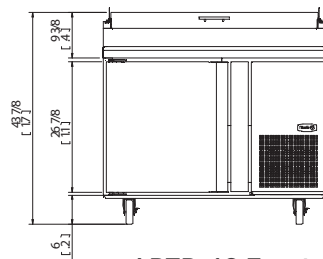
APTP-46 Top



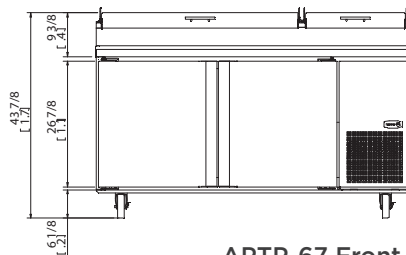
APTP-67 Top



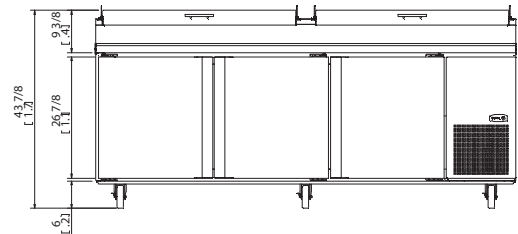
APTP-93 Top



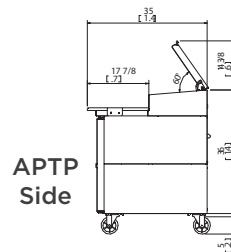
APTP-46 Front



APTP-67 Front

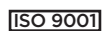


APTP-93 Front



APTP Side

## \* Specifications



### ④ CABINET CONSTRUCTION

- EXTERIOR: Stainless steel, galvanized steel back.
- INTERIOR: Stainless steel.
- CABINET & DOOR: Entire foamed-in-place high-density, Ecomate® CFC-free, polyurethane insulation. Covered corner floor to meet NSF requirements.
- CASTERS: 5" Diamenter swivel casters, front with brakes.
- SHELVES: On a rail system that can also accomodate (2) 12" x 20" foodservice pans per door. Pans sold separately.

### ④ DOORS

- Stainless steel.
- One piece constructions magnetic gasket, removable without tools for easy cleaning and replacement.
- Self-closing doors with 120° stay open feature and recessed handles for convenient loading and unloading.

### ④ REFRIGERATION SYSTEM

- Oversized and balanced refrigeration system.
- R-134A holding temperature at 33°F to 38°F Refrigerators.
- Self-contained capillary tube system using environmentally-friendly and CFC-free refrigerant.
- Front breathing allows unrestricted placement of the unit.
- Large fan motor and fan blades for better air circulation.
- Self contained system, no plumbing necessary.
- Access for the condensing unit behind the front grill slides out for easy cleaning and maintenance.

### ④ ELECTRICAL

- The whole unit is completely pre-wired at factory with cord and plug set included and ready for final connection to a 115/60/1 phase.
- 220V / 50Hz / 1Ph available from factory.

### ④ WARRANTY

Continental US & Canada :

- **One year** labor and parts warranty.
- **Five year** compressor warranty.
- **International:** one year parts only.

\* Asber's specification are subject to change without notice as we continue to make product improvements.